

Loudspeakers *Plus*

CELESTION

2023

Our 24th Year

Lavoce
I T A L I A N A

18
EIGHTEEN
SOUND

EMINENCE®

Pro Audio Speakers, Guitar & Bass Speakers

Lavoce
ITALIANA

CELESTION

18
EIGHTEEN
SOUND

EMINENCE®

EV

JBL

RA

TELEY

MACKIE®

B-52
MADE IN USA

QSC
AUDIO



PURE POTENZA

COMMON HF/LF MAGNET COAXIALS
LOW FREQUENCY TRANSDUCERS
MIDRANGES
SUBWOOFERS
IPAL COMPATIBLE SUBWOOFERS
HF DOME COMPRESSION DRIVERS
HF ANNULAR COMPRESSION DRIVERS
COMPACT FULLRANGES
SOFT DOME TWEETERS

WWW.LAVOCESPEAKERS.COM

LAVOCE Italiana: The Transducer Supplier to Professional Audio and MI manufacturers. Every product from our comprehensive range is designed at our state-of-the-art R&D center in Potenza Picena, Italy, and are now stocked at our new sales operation in Tennessee to better serve our North American customers.



Lavoce
I T A L I A N A

EXPRESSIVE SPEAKER SOLUTIONS FOR BACKLINE PROJECTS

BASS GUITAR SPEAKERS
ELECTRIC GUITAR SPEAKERS
PROFESSIONAL MI SPEAKERS
PROFESSIONAL HIGH FREQUENCY DEVICES



LoudspeakersPlus® Catalog 2023

866.963.0733

www.loudspeakersplus.com
Email: sales@loudspeakersplus.com



CELESTION



LoudspeakersPlus

MACKIE®



Terms and Conditions:

Payment Terms:
All major credit cards and PayPal accepted.

Shipping and Handling:
UPS services. USPS upon request.

Warranties:
Manufacturer warranty by product. Call for details.

Product Returns:
All returns must be pre-approved. Contact us for details.

18 Sound	23-25
Alto	29
B-52	29
Celestion	5-10
EAW	26
Electro-Voice	25
Eminence Speakers	15-22
JBL	27
LaVoce	11-14
LoudspeakersPlus	4
Mackie	24
P Audio	28
Peavey	29
QSC	27
Yorkville	29

Replacement Diaphragms

PHT8RD

Phenolic replacement diaphragm fits Foster N30, 025H30, 025H27, H025N30, FT300H, PAS, Carvin, Yamaha, SWR, Crate, Peavey and others, 8 ohm.


PHT8LRD

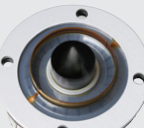
H025 Cerwin Vega diaphragm, fits LK670 STS/Sound Tech models, 1" phenolic dome for V30, V35, PD18, etc. 8 ohm


RD-1072

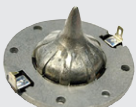
Titanium replacement, fits Altec 288 & 290, and others, 8 or 16 ohm, 2.75" voice coil.


RD-2404

Titanium replacement, fits JBL 2404 & 2405 and others, 8 ohm, 1.75" voice coil.


RD-2406

The Loudspeakers Plus RD2406 compares favorably to the JBL D8R2406 Replacement Annular / Ring Radiator Diaphragm Kit. This annular / ring radiator diaphragm kit fits the JBL 2406H compression driver to deliver smooth, extended high frequency output. Fits JBL M Pro 412, 415


RD-2408

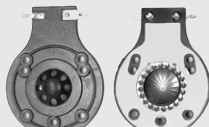
Mylar replacement, fits JBL 2408H and others, 8 ohm, 1.75" voice coil. Fits most JBL MRX cabinets


RD-2408-1

The Loudspeakers Plus RD2408-1 driver. D8R2408-1. 8 ohms.

RD-2412

These replacement diaphragms have the same style titanium domes, voice coils, and Kapton formers as original JBL diaphragms. This after market diaphragm is made to JBL 2412H-1 specifications and fits the 2412 Series of drivers: 2412, 2412H, 2412H-8, 2412-8, 2412-1, 2412H-1, 2412H-1-8, Sound Factor Series, SF-15, SR25, SR-25, JRX Series, JRX100, JRX112, JRX112M, JRX112MJ, JRX115, JRX115L, JRX-100, JRX-112M, JRX-112MJ, JRX-115, JRX-115L, TR Series, MPro Series, TR125, TR-225, MP-215, Eon Power15, Eon1500, Eon Power10, JBL M Pro 212, 215, 225 & 410 and many more! Titanium replacement, 8 ohms, 1" voice coil.


RD-2416

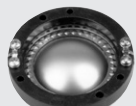
Titanium replacement, fits JBL 2416 and JBL Series "MR" cabinets, 2417, 8 ohm, 1.75" voice coil.


RD-2418

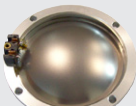
Titanium replacement, fits JBL 2418H, H-1, X-Tealth and JBL Series "EON" cabinets, 8 ohm, 1.75" voice coil.


RD-2425

Titanium replacement, fits JBL 2425, JBL 2426, JBL 2427H (8 ohm), JBL 2427J (16 ohm), Altec 802, 804, 806, 807, 808, 902, 904, 908, 909 and others, 8 or 16 ohms, 1.75" voice coil.


RD-2431

Titanium replacement, fits JBL 2431H, 8 ohms, 3.0" voice coil.


RD-2446

Titanium replacement, fits CD-2445, JBL 2445, JBL 2446, 375, 2440, 2441, 2447, 2450, 2451, Peavey 44T, 44XT and others, 8 or 16 ohms, 4" voice coil. Positive terminal is blue dot.


RD-2451

Titanium replacement, fits JBL 2446, 2445, 2450, 2451, 2452, 8 or 16 ohms, 4" voice coil.

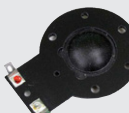

Replacement Diaphragms (Con't.)

RDDH1K

Aftermarket replacement diaphragm 3" voice coil, 8 ohms. DH1K, ELX112, ELX115, ELX215, ELX112P, ELX115P, ASY001060000, S-F01U247593, Live X


RDHCD1175

Replacement diaphragm for B52 - Comp 4MX. 44mm.


RD-3910D

Replacement diaphragm for Foster, Vega, Klipsch, Pyle, and other high frequency drivers including Alto HG00081 1"-0811.


RD-81161

Replacement diaphragm for the EV DH2A, DH2, DH2/AS1, DH2/AS2, DH2AMT and DH2T drivers.


RD-81514

Replacement diaphragm for EV DH2010A, DH2005, DH2010A, DH-3, DH-2005, DH-2010A, 833-2442, more.


RD-84233

EV 84233 Diaphragm for DH6, ND6-16. 16 ohms.


RD-84234

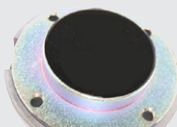
EV 84234 Diaphragm for DH5-8WPX, DH6-8, DH7-8, N-DYM-1, N/DYM5-8, N/DYM 5-8/2, ND6-8. Also replaces EV DH1, DH1A, DH1AM7, DH1A-WP, DH1A-WPX, DH1012, N-DYM1 and N-DYM-1MT drivers. 84234xx and 81256xx.


RDMMD75

Replacement Diaphragm for EAW* / B&C Models: DM-5001, CD-5001, DM-5002, CD5002, DM-5003, DM5003, CD-5003, DM-5005, CD-5005, DE-75-8, MMD75-8, MMD75TN, DE75TN, DE82TN, DE-85-TN, DE72TN, also fits EAW CD3512 and DE72-8 8 and 16 ohm.


RDV21

Phenolic replacement for Jensen/Leslie V21 driver, 16 ohm

1-Inch HF Compression Drivers

LSP2414H-1

Size: 1-inch exit • Diaphragm: Titanium • Power Rating: 35W AES • Sensitivity: 98db • Frequency Response: 1.9k-20kHz. Impedance: 8 Ohms • Weight: 2 lbs. • Ferrite magnet • Bolt-on


LSPThump4ohm

Size: 1-inch exit • Diaphragm: Titanium • Power Rating: 35W AES • Sensitivity: 98db • Frequency Response: 1.9k-20kHz. Impedance: 8 Ohms • Weight: 2 lbs. • Ferrite magnet • Bolt-on


LSPThump8ohm

Size: 1-inch exit • Diaphragm: Titanium • Power Rating: 35W AES • Sensitivity: 98db • Frequency Response: 1.9k-20kHz. Impedance: 8 Ohms • Weight: 2 lbs. • Ferrite magnet • Bolt-on

Guitar Speakers

Discontinued - Last chance to buy.



Heritage Series

Heritage G12-65

Size: 12-inch • Power Rating: 65W RMS/130W Continuous • Sensitivity: 97dB • Frequency Response: 80-5kHz • Impedance: 8 or 15 ohm • Magnet: 35 oz. Ceramic • Voice Coil: 1.75" Round Copper • Frame: Pressed Steel

Alnico Series

Celestion Blue

Size: 12-inch • Power Rating: 15W RMS/30W Continuous • Sensitivity: 100dB • Frequency Response: 75-5kHz • Impedance: 8 or 15 ohm • Weight: 9.3 lb. • Voice Coil: 1.75" Round Copper • Frame: Pressed Steel • Magnet: Alnico

Celestion Gold

Size: 12-inch • Power Rating: 50W RMS/100W Continuous • Sensitivity: 100dB • Frequency Response: 75-5kHz • Impedance: 8 or 15 ohm • Magnet: Alnico • Voice Coil: 1.75" Round Copper • Frame: Pressed Steel

Celestion Cream

Size: 12-inch • Power Rating: 90W RMS/180W Continuous • Sensitivity: 100dB • Frequency Response: 75-5kHz • Impedance: 8 or 16 ohm • Magnet: Alnico • Voice Coil: 1.75" Round Copper • Frame: Pressed Steel

G10 Gold

Size: 10-inch • Power Rating: 40W RMS • Sensitivity: 98dB • Frequency Response: 80-6kHz • Impedance: 8 or 15 ohm • Magnet: Alnico • Voice Coil: 1.75" Round Copper • Frame: Pressed Steel

Celestion Ruby

Size: 12-inch • Power Rating: 35W RMS/70W Continuous • Sensitivity: 100dB • Frequency Response: 75-5kHz • Impedance: 8 or 16 ohm • Magnet: Alnico • Voice Coil: 1.75" Round Copper • Frame: Pressed Steel



Classic Series

G15V-100 Fullback

Size: 15-inch • Power Rating: 100W RMS/200W Continuous • Sensitivity: 99dB • Frequency Response: 65-4kHz • Impedance: 8 or 16 ohm • Magnet: 50 oz. Ceramic • Voice Coil: 2" Round Copper • Frame: Pressed Steel

Neo Copperback

Size: 12-inch • Power Rating: 250W RMS/500W Continuous • Sensitivity: 100dB • Frequency Response: 70-5.5kHz • Impedance: 4, 8 or 16 ohm • Magnet: Neodymium • Voice Coil: 2.5" Round Copper • Frame: Pressed Steel

G12H-150 Redback

Size: 12-inch • Power Rating: 150W RMS/300W Continuous • Sensitivity: 100dB • Frequency Response: 70-5kHz • Impedance: 8 or 16 ohm • Magnet: 50 oz. Ceramic • Voice Coil: 2.0" Round Copper • Frame: Pressed Steel

G12M-65 Creamback

Size: 12-inch • Power Rating: 65W RMS/130W Continuous • Sensitivity: 97dB • Frequency Response: 75-5kHz • Impedance: 8 or 16 ohm • Magnet: 35 oz. Ceramic • Voice Coil: 1.75" Round Copper • Frame: Pressed Steel

G12H-75 Creamback

Size: 12-inch • Power Rating: 75W RMS/150W Continuous • Sensitivity: 100dB • Frequency Response: 75-5kHz • Impedance: 8 or 16 ohm • Magnet: 50 oz. Ceramic • Voice Coil: 1.75" Round Copper • Frame: Pressed Steel

Neo Creamback

Size: 12-inch • Power Rating: 60W RMS/120W Continuous • Sensitivity: 97dB • Frequency Response: 75-5kHz • Impedance: 8 or 16 ohm • Magnet: Neodymium • Voice Coil: 1.75" Round Copper • Frame: Pressed Steel

G12M Greenback

Size: 12-inch • Power Rating: 25W RMS/50W Continuous • Sensitivity: 98dB • Frequency Response: 75-5kHz • Impedance: 8 or 16 ohm • Magnet: 35 oz. Ceramic • Voice Coil: 1.75" Round Copper • Frame: Pressed Steel

G12H Anniversary

Size: 12-inch • Power Rating: 30W RMS/60W Continuous • Sensitivity: 100dB • Frequency Response: 75-5kHz • Impedance: 8 or 16 ohm • Magnet: 50 oz. Ceramic • Voice Coil: 1.75" Round Copper • Frame: Pressed Steel

Vintage 30

Size: 12-inch • Power Rating: 60W RMS/120W Continuous • Sensitivity: 100dB • Frequency Response: 70-5kHz • Impedance: 8 or 16 ohm • Magnet: 50 oz. Ceramic • Voice Coil: 1.75" Round Copper • Frame: Pressed Steel

Classic Series (con't.)

Neo V-Type

Size: 12-inch • Power Rating: 70W RMS/140W Continuous • Sensitivity: 98dB • Frequency Response: 75-5kHz • Impedance: 8 or 16 ohm • Magnet: Neodymium • Voice Coil: 1.75" Round Copper • Frame: Pressed Steel

F12X-200

Size: 12-inch • Power Rating: 200W RMS/400W Continuous • Sensitivity: 97dB • Frequency Response: 60-20kHz • Impedance: 8 ohm • Magnet: Ceramic • Voice Coil: 2" Round Copper • Frame: Pressed Steel

F12M-150

Size: 12-inch • Power Rating: 150W RMS/300W Continuous • Sensitivity: 97dB • Frequency Response: 60-12kHz • Impedance: 8 ohm • Magnet: 35 oz. Ceramic • Voice Coil: 2" Round Copper • Frame: Pressed Steel: Triple Cone

G10 Creamback

Size: 10-inch • Power Rating: 45W RMS/90W Continuous • Sensitivity: 96dB • Frequency Response: 95-5.5kHz • Impedance: 8 or 16 ohm • Magnet: 20 oz. Ceramic • Voice Coil: 1.75" Round Copper • Frame: Pressed Steel

G12T-75

Size: 12-inch • Power Rating: 75W RMS/150W Continuous • Sensitivity: 97dB • Frequency Response: 80-5kHz • Impedance: 8 or 16 ohm • Magnet: 35 oz. Ceramic • Voice Coil: 1.75" Round Copper • Frame: Pressed Steel

G12K-100

Size: 12-inch • Power Rating: 100W RMS/200W Continuous • Sensitivity: 100dB • Frequency Response: 70-5.5kHz • Impedance: 8 ohm • Magnet: 50 oz. Ceramic • Voice Coil: 1.75" Round Copper • Frame: Pressed Steel

G10 Greenback

Size: 10-inch • Power Rating: 30W RMS/60W Continuous • Sensitivity: 95dB • Frequency Response: 95-5.5kHz • Impedance: 8 or 16 ohm • Magnet: Ceramic • Voice Coil: 1.75" Round Copper • Frame: Pressed Steel

G10 Vintage

Size: 10-inch • Power Rating: 60W RMS/120W Continuous • Sensitivity: 99dB • Frequency Response: 100-5.5kHz • Impedance: 8 or 16 ohm • Magnet: 31 oz. Ceramic • Voice Coil: 1.75" Round Copper • Frame: Pressed Steel

Classic Lead 80

Size: 12-inch • Power Rating: 80W RMS/160W Continuous • Sensitivity: 99dB • Frequency Response: 80-5kHz • Impedance: 8 or 16 ohm • Magnet: 50 oz. Ceramic • Voice Coil: 1.75" Round Copper • Frame: Pressed Steel

V-Type

Size: 12-inch • Power Rating: 70W RMS/140W Continuous • Sensitivity: 98dB • Frequency Response: 75-5kHz • Impedance: 8 or 16 ohm • Magnet: 31 oz. Ceramic • Voice Coil: 1.75" Round Copper • Frame: Pressed Steel

A-Type

Size: 12-inch • Power Rating: 50W RMS/100W Continuous • Sensitivity: 98dB • Frequency Response: 75-5kHz • Impedance: 8 or 16 ohm • Magnet: 35 oz. Ceramic • Voice Coil: 1.75" Round Copper • Frame: Pressed Steel

VT-Junior

Size: 10-inch • Power Rating: 50W RMS/100W Continuous • Sensitivity: 95dB • Frequency Response: 90-5.5kHz • Impedance: 8 or 16 ohm • Magnet: 20 oz. Ceramic • Voice Coil: 1.75" Round Copper • Frame: Pressed Steel

Original Series

Seventy 80

Size: 12-inch • Power Rating: 80W RMS/160W Continuous • Sensitivity: 98dB • Frequency Response: 80-5kHz • Impedance: 8 or 16 ohm • Magnet: 31 oz. Ceramic • Voice Coil: 1.75" Round Copper • Frame: Pressed Steel

Midnight 60

Size: 12-inch • Power Rating: 60W RMS/120W Continuous • Sensitivity: 96dB • Frequency Response: 75-5kHz • Impedance: 8 or 16 ohm • Magnet: 20 oz. Ceramic • Voice Coil: 1.75" Round Copper • Frame: Pressed Steel

Ten 30

Size: 10-inch • Power Rating: 30W RMS/60W Continuous • Sensitivity: 95dB • Frequency Response: 90-5.5kHz • Impedance: 8 or 16 ohm • Magnet: 16 oz. ceramic • Voice Coil: 1.25" Round Copper • Frame: Pressed Steel

Eight 15

Size: 8-inch • Power Rating: 20W RMS/40W Continuous • Sensitivity: 95dB • Frequency Response: 100-6kHz • Impedance: 4, 8 or 16 ohm • Magnet: 13 oz. ceramic • Voice Coil: 1.0" Round Copper • Frame: Pressed Steel • Perfect Fender Champ replacement speaker

Signature Series

G12-EVH

Size: 12-inch • Power Rating: 20W RMS/40W Continuous • Sensitivity: 96dB • Frequency Response: 75-5kHz • Impedance: 8 or 15 ohm • Magnet: 35 oz. Ceramic • Voice Coil: 1.75" Round Copper • Frame: Pressed Steel

Discontinued—Last Chance to Buy



Bass Series

PULSE 10

Size: 10-inch • Power Rating: 200W RMS/400W Continuous
• Sensitivity: 94dB • Frequency Response: 45-3.5kHz • Impedance: 8 ohm • Magnet: Ferrite • Voice Coil: 2.0" Round Copper • Frame: Pressed Steel • Kevlar-loaded paper cone with cloth-sealed surround

PULSE 12

Size: 12-inch • Power Rating: 200W RMS/400W Continuous
• Sensitivity: 94dB • Frequency Response: 45-3.5kHz • Impedance: 8 ohm • Magnet: Ferrite • Voice Coil: 2.0" Round Copper • Frame: Pressed Steel • Kevlar-loaded paper cone with cloth-sealed surround

PULSE 15

Size: 15-inch • Power Rating: 400W RMS/800W Continuous
• Sensitivity: 96dB • Frequency Response: 40-3.5kHz • Impedance: 8 ohm • Magnet: Ferrite • Voice Coil: 3.0" Round Copper • Frame: Pressed Steel • Kevlar-loaded paper cone with cloth-sealed surround

21" Subwoofers



NTR21-5010JD

Size: 21-inch • Power Rating: 1600W RMS/3200W Continuous
• Sensitivity: 98dB • Frequency Response: 30-2kHz • Impedance: 8 ohm • Magnet: Neodymium • Voice Coil: 5" Round Copper • Frame: Cast Aluminum

18" Subwoofers



CF18VJD

Size: 18-inch • Power Rating: 1600W RMS/3200W Continuous
Sensitivity: 97dB • Frequency Response: 25-1500Hz
Impedance: 8 ohm • Weight: 50.6 lb/23kg • Voice Coil: 5" inside/outside • Frame: Cast Aluminum • Magnet: 174 oz. Ferrite



CF1840JD

Size: 18-inch • Power Rating: 1200W RMS/2400W Continuous
• Sensitivity: 95dB • Frequency Response: 30-2500Hz • Impedance: 8 ohm • Weight: 25.5 lb/11.6kg • Voice Coil: 4" inside/outside • Frame: Cast Aluminum • Magnet: 112 oz. Ferrite



FTR18-4080HDX

Size: 18-inch • Power Rating: 1000W RMS/2000W Continuous
• Sensitivity: 95dB • Frequency Response: 30-2.5kHz • Impedance: 8 ohm • Magnet: 110 oz. Ferrite • Voice Coil: 4" inside/outside • Frame: Cast Aluminum • Replacement for EAW LC18-4007-8.



FTR18-4080FD

Size: 18-inch • Power Rating: 1000W RMS/2000W Continuous
• Sensitivity: 97dB • Frequency Response: 30-2.5kHz • Impedance: 8 ohm • Magnet: 110 oz. Ferrite • Voice Coil: 4" inside/outside • Frame: Cast Aluminum

15" Subwoofers



FTR15-4080HDX

Size: 15-inch • Power Rating: 1000W RMS/2000W Continuous
• Sensitivity: 96dB • Frequency Response: 40-2.5kHz • Impedance: 8 ohm • Magnet: 110 oz. Ferrite • Voice Coil: 4" inside/outside • Frame: Cast Aluminum

15" Bass/Mid-Bass



FTR15-4080F

Size: 15-inch • Power Rating: 600W RMS/1200W Continuous
• Sensitivity: 99dB • Frequency Response: 35-3kHz • Impedance: 8 ohm • Magnet: 110 oz. Ferrite • Voice Coil: 4" inside/outside • Frame: Cast Aluminum



FTR15-3070C

Size: 15-inch • Power Rating: 400W RMS/800W Continuous
• Sensitivity: 99dB • Frequency Response: 40-3kHz • Impedance: 8 ohm • Magnet: 81 oz. Ferrite • Voice Coil: 3" inside/outside • Frame: Cast Aluminum



TF1530

Size: 15-inch • Power Rating: 400W RMS/800W Continuous
• Sensitivity: 99dB • Frequency Response: 40-3kHz • Impedance: 8 ohm • Magnet: 86 oz. Ferrite • Voice Coil: 3" Round Copper • Frame: Pressed Steel



TF1525E

Size: 15-inch • Power Rating: 300W RMS/600W Continuous
• Sensitivity: 98dB • Frequency Response: 40-3kHz • Impedance: 8 ohm • Magnet: 42 oz. Ferrite • Voice Coil: 2.5" Edgewound Copper • Frame: Pressed Steel

12" Bass/Mid-Bass



FTR12-3070C

Size: 12-inch • Power Rating: 350W RMS/700W Continuous
• Sensitivity: 96dB • Frequency Response: 40-4kHz • Impedance: 8 ohm • Magnet: 81 oz. Ferrite • Voice Coil: 3" Round Copper • Frame: Cast Aluminum



TN 1230

Size: 12-inch • Power Rating: 350W RMS/700W Continuous
• Sensitivity: 97dB • Frequency Response: 50-4kHz • Impedance: 8 ohm • Magnet: Neodymium • Voice Coil: 3" Round Copper • Frame: Pressed Steel
Replacement for HPR1221.

NEODYMIUM

12" Bass/Mid-Bass



TF 1230S

Size: 12-inch • Power Rating: 300W RMS/700W Continuous • Sensitivity: 96dB • Frequency Response: 50-4kHz • Impedance: 8 ohm • Magnet: 60 oz. Ferrite • Voice Coil: 3" Edgewound Copper Clad Aluminum • Frame: Pressed Steel
Replacement for Mackie SRM450 v2/3



TF 1225E

Size: 12-inch • Power Rating: 300W RMS/600W Continuous • Sensitivity: 96dB • Frequency Response: 50-3kHz • Impedance: 8 ohm • Magnet: 50 oz. Ferrite • Voice Coil: 2.5" Edgewound Copper • Frame: Pressed Steel



TF 1220

Size: 12-inch • Power Rating: 150W RMS/300W Continuous • Sensitivity: 97dB • Frequency Response: 60-4kHz • Impedance: 8 ohm • Unit Weight: 11 lb. • Voice Coil: 2" Round Copper • Frame: Pressed Steel

10" Bass/Mid-Bass



TF 1020

Size: 10-inch • Power Rating: 150W RMS/300W Continuous • Sensitivity: 97dB • Frequency Response: 60-5kHz • Impedance: 8 ohm • Magnet: 42 oz. Ferrite • Voice Coil: 2" Round Copper • Frame: Pressed Steel



CF 1025C

Size: 10-inch • Power Rating: 300W RMS/600W Continuous • Sensitivity: 99dB • Frequency Response: 60-5kHz • Impedance: 8 ohm • Magnet: 60 oz. Ferrite • Voice Coil: 2.5" Edgewound Copper Clad Aluminum • Frame: Cast Aluminum



CF 108MB

Size: 10-inch • Power Rating: 300W RMS/600W Continuous • Sensitivity: 92.5dB • Frequency Response: 45-5kHz • Impedance: 8 ohm • Magnet: 50 oz. Ferrite • Voice Coil: 2.5" Round Copper • Frame: Cast Aluminum

8"-5" All Purpose



FTR 08-2011D

Size: 8-inch • Power Rating: 200W RMS/400W Continuous • Sensitivity: 93dB • Frequency Response: 70-6kHz • Impedance: 8 ohm • Voice Coil: 2" Round Copper • Frame: Cast Aluminum • Weatherproof cone



NTR 08-2011D

Size: 8-inch • Power Rating: 200W RMS/400W Continuous • Sensitivity: 92dB • Frequency Response: 70-6kHz • Impedance: 8 ohm • Unit Weight: 3.34 lb. • Voice Coil: 2" Round Copper • Frame: Cast Aluminum • Weatherproof cone



CF 0820BMB

Size: 8-inch • Power Rating: 250W RMS/500W Continuous • Sensitivity: 93dB • Frequency Response: 50-6kHz • Impedance: 8 ohm • Magnet: 34.8 oz. Ferrite • Voice Coil: 2.0" Copper Clad Aluminum • Frame: Cast Aluminum

NEODYMIUM



CF0820M

Size: 8-inch • Power Rating: 250W RMS/500W Continuous • Sensitivity: 98dB • Frequency Response: 150-6kHz • Impedance: 8 ohm • Magnet: 45 oz. Ferrite • Voice Coil: 2.0" Copper Clad Aluminum • Frame: Cast Aluminum

TF0818

Size: 8-inch • Power Rating: 100W RMS/200W Continuous • Sensitivity: 94dB • Frequency Response: 70-6kHz • Impedance: 8 ohm • Magnet: 31 oz. Ferrite • Voice Coil: 1.75" Round Copper • Frame: Pressed Steel

CF0617M

Size: 6.5-inch • Power Rating: 200W RMS/400W Continuous • Sensitivity: 96dB • Frequency Response: 300-7kHz • Impedance: 8 ohm • Magnet: 22 oz. Ferrite • Voice Coil: 1.75" Copper Clad Aluminum • Frame: Cast Aluminum • Midrange Speaker

NEODYMIUM

NTR06-1705B

Size: 6.5-inch • Power Rating: 150W RMS/300W Continuous • Sensitivity: 95dB • Frequency Response: 150-7kHz • Impedance: 8 ohm • Unit Weight: 1.87 lb. • Voice Coil: 1.75" Round Copper • Frame: Cast Aluminum • Midrange Speaker

TF0615MR

Size: 6-inch • Power Rating: 50W RMS/100W Continuous • Sensitivity: 97dB • Frequency Response: 500-5kHz • Impedance: 8 ohm • Magnet: 17 oz. Ferrite • Voice Coil: 1.5" Round Copper • Frame: Pressed Steel • Dedicated mid-range speaker

TF0615

Size: 6-inch • Power Rating: 100W RMS/200W Continuous • Sensitivity: 94dB • Frequency Response: 85-6kHz • Impedance: 8 ohm • Unit Weight: 3.1 lb. • Voice Coil: 1.5" Round Copper • Frame: Pressed Steel

TF0510

Size: 5-inch • Power Rating: 30W RMS/60W Continuous • Sensitivity: 91dB • Frequency Response: 130-8kHz • Impedance: 8 ohm • Magnet: 13 oz. • Voice Coil: 1" Round Copper • Frame: Pressed Steel

Coaxial/Twin-Cone Speakers



FTX 0617

Size: 6.5-inch Coaxial • Power Rating: 150W RMS/300W Continuous • Sensitivity: 92dB • Frequency Response: 110-20kHz • Impedance: 8 ohm • Unit Weight: 6.6 lb. • Voice Coil: 1.75" voice coil • Frame: Cast Aluminum



FTX 0820

Size: 8-inch Coaxial • Power Rating: 200W RMS/400W Continuous • Sensitivity: 94dB • Frequency Response: 110-20kHz • Impedance: 8 ohm • Unit Weight: 9.0 lb. • Voice Coil: 2.0" voice coil • Frame: Cast Aluminum



FTX 1025

Size: 10-inch Coaxial • Power Rating: 300W RMS/700W Continuous • Sensitivity: 96dB • Frequency Response: 60-20kHz • Impedance: 8 ohm • Unit Weight: 9.9 lb. • Voice Coil: 2.5" voice coil • Frame: Cast Aluminum



FTX1225

Size: 12-inch Coaxial • Power Rating: 300W RMS/600W Continuous • Sensitivity: 97dB • Frequency Response: 50-20kHz • Impedance: 8 ohm • Unit Weight: 13.0 lb. • Voice Coil: 2.5" Round Copper • Frame: Cast Aluminum

FTX1530

Size: 15-inch Coaxial • Power Rating: 400W RMS/800W Continuous • Sensitivity: 97dB • Frequency Response: 40-20kHz • Impedance: 8 ohm • Unit Weight: 14.3 lb. • Voice Coil: 3.0" Edgewound Copper Clad Aluminum • Frame: Cast Aluminum

K12H-100TC

Size: 12-inch Twin Cone • Power Rating: 100W RMS/200W Continuous • Sensitivity: 97dB • Frequency Response: 50-10kHz • Impedance: 8 ohm • Unit Weight: 10 lb. • Voice Coil: 1.75" Round Copper • Frame: Stamped Steel

K12H-200TC

Size: 12-inch Twin Cone • Power Rating: 200W RMS/400W Continuous • Sensitivity: 98dB • Frequency Response: 50-10kHz • Impedance: 8 ohm • Unit Weight: 11 lb. • Voice Coil: 2.0" Round Copper • Frame: Stamped Steel

Full-Range Speakers



AN3510

Size: 3.5-inch • Power Rating: 35W RMS/40W Continuous • Sensitivity: 87dB • Frequency Response: 98-18.5kHz • Impedance: 8 ohm • Unit Weight: 5.65 oz. • Voice Coil: 1" Round Copper

AN2775

Size: 2.75-inch • Power Rating: 20W RMS/40W Continuous • Sensitivity: 84dB • Frequency Response: 190-20kHz • Impedance: 8 ohm • Unit Weight: 3.53 oz. • Voice Coil: 0.75" Round

AN2075

Size: 2-inch • Power Rating: 20W RMS/40W Continuous • Sensitivity: 80dB • Frequency Response: 160-19kHz • Impedance: 8 ohm • Unit Weight: 3.4 oz. • Voice Coil: 0.75" Round Copper

2" Exit Compression Drivers



CDX20-3020

Size: 2-inch exit • Power Rating: 100W RMS/200W Continuous • Sensitivity: 107dB • Frequency Response: 300-20kHz • Impedance: 8 ohm • Unit Weight: 10.8 lb. • Voice Coil: Edgewound 3" Copper Clad Aluminum • Diaphragm: Titanium

Axi2050

Size: 2-inch exit • Power Rating: 150W RMS/300W Continuous • Sensitivity: 108dB • Frequency Response: 300-20kHz • Impedance: 8 ohm • Unit Weight: 16.5 lb. • Voice Coil: Edgewound 5" Copper Clad Aluminum • Diaphragm: Titanium • Magnet: Neodymium

1.4" Exit Compression Drivers



CDX14-3050

NEODYMIUM

Size: 1.4-inch exit • Power Rating: 75W RMS/150W Continuous • Sensitivity: 106.5dB • Frequency Response: 500-18kHz • Impedance: 8 ohm • Magnet: Neodymium • Voice Coil: 3" Edgewound Copper Clad Aluminum • Diaphragm: Deep Drawn Titanium

CDX14-3040

NEODYMIUM

Size: 1.4-inch exit • Power Rating: 75W RMS/150W Continuous • Sensitivity: 106.5dB • Frequency Response: 500-20kHz • Impedance: 8 ohm • Magnet: Neodymium • Voice Coil: 3" Edgewound Copper Clad Aluminum • Diaphragm: Titanium

CDX14-2420

NEODYMIUM

Size: 1.4-inch exit • Power Rating: 70W RMS/140W Continuous • Sensitivity: 106.5dB • Frequency Response: 800-20kHz • Impedance: 8 ohm • Magnet: Neodymium • Voice Coil: 2.4" Edgewound Copper Clad Aluminum • Diaphragm: Deep Drawn Titanium

1" Exit Compression Drivers



CDX1-1412

NEODYMIUM

Size: 1-inch exit • Power Rating: 35W RMS/70W Continuous • Sensitivity: 106dB • Frequency Response: 1500-20kHz • Impedance: 8 ohm • Magnet: Neodymium • Voice Coil: 1.4" Edgewound Copper Clad Aluminum • Diaphragm: Polyimide

CDX1-1720

NEODYMIUM

Size: 1-inch exit • Power Rating: 50W RMS/100W Continuous • Sensitivity: 107dB • Frequency Response: 800-20kHz • Impedance: 8 ohm • Magnet: Neodymium • Voice Coil: 1.75" Edgewound Copper Clad Aluminum • Diaphragm: Deep Drawn

CDX1-1730

NEODYMIUM

Size: 1-inch exit • Power Rating: 40W RMS/80W Continuous • Sensitivity: 110dB • Frequency Response: 1200-20kHz • Impedance: 8 ohm • Magnet: Neodymium • Voice Coil: 1.75" Edgewound Copper Clad Aluminum • Diaphragm: PETP Film

CDX1-1731

NEODYMIUM

Size: 1-inch exit • Power Rating: 40W RMS/80W Continuous • Sensitivity: 110dB • Frequency Response: 1200-20kHz • Impedance: 8 ohm • Magnet: Neodymium • Voice Coil: 1.75" Edgewound Copper Clad Aluminum • Diaphragm: PETP Film • Screw-on

CDX1-1745

Size: 1-inch exit • Power Rating: 40W RMS/80W Continuous • Sensitivity: 110dB • Frequency Response: 1200-20kHz • Impedance: 8 ohm • Magnet: Ferrite • Voice Coil: 1.75" Edgewound Copper Clad Aluminum • Diaphragm: PETP Film

CDX1-1746

Size: 1-inch exit screw-on • Power Rating: 40W RMS/80W Continuous • Sensitivity: 110dB • Frequency Response: 1200-20kHz • Impedance: 8 ohm • Magnet: Ferrite • Voice Coil: 1.75" Edgewound Copper Clad Aluminum • Diaphragm: PETP Film

1" Exit Compression Drivers



CDX1-1747

Size: 1-inch exit • Power Rating: 60W RMS/120W Continuous • Sensitivity: 110dB • Frequency Response: 1000-20KHz • Impedance: 8 ohm • Unit Weight: 5.1 lb. • Voice Coil: 1.75" Edgewound Copper Clad Aluminum • Diaphragm: Polyimide •



CDX1-1748

Size: 1-inch exit • Power Rating: 60W RMS/120W Continuous • Sensitivity: 110dB • Frequency Response: 1000-20KHz • Impedance: 8 ohm • Unit Weight: 5.1 lb. • Voice Coil: 1.75" Edgewound Copper Clad Aluminum • Diaphragm: Polyimide • 1600Hz Recommended crossover • Screw-on mounting



CDX1-1430

Size: 1-inch exit • Power Rating: 50W RMS/100W Continuous • Sensitivity: 108dB • Frequency Response: 2000-20KHz • Impedance: 8 ohm • Magnet: Neodymium • Voice Coil: 1.4" Copper Clad Aluminum • Diaphragm: Aluminum

NEODYMIUM



CDX1-1440 (No single pack)

Size: 1-inch exit • Power Rating: 25W RMS/50W Continuous • Sensitivity: 106dB • Frequency Response: 2000-20KHz • Impedance: 8 ohm • Magnet: Ferrite • Voice Coil: 1.4" Copper Clad Aluminum • Diaphragm: Deep Drawn Titanium



CDX1-1446

Size: 1-inch exit screw-on • Power Rating: 20W RMS/40W Continuous • Sensitivity: 106dB • Frequency Response: 1500-20KHz • Impedance: 8 ohm • Unit Weight: 1.1 lb. • Voice Coil: 1.4" Copper Clad Aluminum • Diaphragm: PETP Film



CDX1-1445

Size: 1-inch exit • Power Rating: 20W RMS/40W Continuous • Sensitivity: 106dB • Frequency Response: 1500-20KHz • Impedance: 8 ohm • Magnet: Ferrite • Voice Coil: 1.4" Copper Clad Aluminum • Diaphragm: PETP Film



CDX1-1425

Size: 1-inch exit • Power Rating: 25W RMS • Sensitivity: 108dB • Frequency Response: 2000-20KHz • Impedance: 8 ohm • Magnet: Neodymium • Voice Coil: 1.4" Copper Clad Aluminum • Diaphragm: Aluminum

NEODYMIUM



CDX1-1415

Size: 1-inch exit • Power Rating: 20W RMS/40W Continuous • Sensitivity: 104dB • Frequency Response: 2000-20KHz • Impedance: 8 ohm • Magnet: Neodymium • Voice Coil: 1.4" Copper Clad Aluminum • Diaphragm: Aluminum

NEODYMIUM



CDX1-1010

Size: 1-inch exit screw-on • Power Rating: 15W RMS/30W Continuous • Sensitivity: 107dB • Frequency Response: 1500-20KHz • Impedance: 8 ohm • Unit Weight: 1.8 lb. • Voice Coil: 1.0" Copper Clad Aluminum • Diaphragm: PETP Film

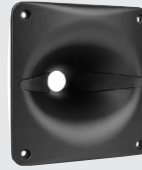


CDX1-1070

Size: 1-inch exit bolt-on • Power Rating: 12W RMS/24W Continuous • Sensitivity: 106dB • Frequency Response: 1500-20KHz • Impedance: 8 ohm • Unit Weight: 1.5 lb. • Voice Coil: 1.0" Copper Clad Aluminum • Diaphragm: PETP Film

Recone kits Available, Please Inquire

Horns



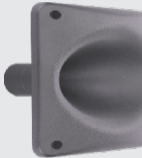
H1-7050

- 1-inch exit bolt-on
- Cast aluminum horn flare
- 70° x 50°; 1.5kHz cut-off
- 7.1"W x 7.1"H x 3.5"D
- Cut-out: 6.1" x 6.1"



H1-9040P

- 1-inch exit bolt-on
- Reinforced polymer horn flare
- 90° x 40°; 1.5kHz cut-off
- 12.5"W x 7.8"H x 8.2"D
- Cut-out: 6.5" x 10.2"



H1SC-8050

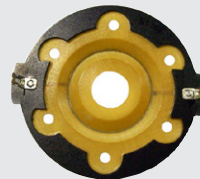
- 1-inch exit screw-on
- Reinforced ABS horn flare
- 80° x 50°; 1.5kHz cut-off
- 7.0"W x 7.0"H x 3.46"D
- Cut-out: 6.1" x 6.1"



H1SC-9040

- 1-inch exit screw-on
- Reinforced ABS horn flare
- 90° x 40°; 1.5kHz cut-off
- 11.7"W x 4.1"H x 5.7"D
- Cut-out: 9.8" x 2.9"

Replacement Diaphragms



Celestion T5500/R

Replacement Diaphragm for Celestion HF50, 8 ohm.



Celestion T5503

Replacement Diaphragm that fits CDX1-1415, CDX1-1425, CDX1-1430 and the HF Driver in QSC HPR1221 Speaker Box - 8 ohm. Also fits Yorkville NX55P, NX300, YX10, YX12, YX12M, YX15, YX15P, and YX215 cabs.



Celestion T5510

Celestion replacement diaphragm that fits Fits CDX1 1730, 1731, 1745, 1746. Also fits Harbinger HP series cabinets - 8 ohm



Celestion T5526

Celestion 3" Titanium Diaphragm that fits CDX14-3050, CDX14-3060, CDX20-3000, CDX20-3075 - 8 ohm



Celestion T5549

Celestion PETP replacement diaphragm that fits Celestion CDX1-1445 and CDX1-1446 HF drivers - 8 ohm



Celestion T5555

Celestion replacement diaphragm that fits CDX1-1720.

No Photo Available

Celestion T5572

Celestion replacement diaphragm that fits CDX1-1747 and CDX1-1748.

21" Subwoofers



SAN216.00iP

Size: 21" • Power Rating: 2,500W AES • Sensitivity: 99db
 Impedance: 1 Ohms • Voice Coil: 6", 152mm • Freq.
 Response: 35-1kHz • Resonant Freq.: 36 Hz • Magnet:
 Neodymium • Weight: 45.6 lbs • Frame: Cast Aluminum



SAN215.30

Size: 21" • Power Rating: 2,000W AES • Sensitivity: 97db
 Impedance: 8 Ohms • Voice Coil: 5.3", 132mm • Freq.
 Response: 30-1kHz • Resonant Freq.: 35 Hz • Magnet:
 Neodymium • Weight: 33.4 lbs • Frame: Cast Aluminum



SAN214.50

Size: 21" • Power Rating: 1,700W AES • Sensitivity: 98.5db
 Impedance: 8 Ohms • Voice Coil: 4.5", 125.6mm • Freq.
 Response: 30-1kHz • Resonant Freq.: 30 Hz • Magnet:
 Neodymium • Weight: 32.5 lbs • Frame: Cast Aluminum

18" Subwoofers



SAN184.50iP

Size: 18" • Power Rating: 1,700W AES • Sensitivity: 98db
 Impedance: 2 Ohms • Voice Coil: 4.5", 115mm • Freq.
 Response: 30-1kHz • Resonant Freq.: 34 Hz • Magnet:
 Neodymium • Weight: 33.3 lbs • Frame: Cast Aluminum



SAN184.50

Size: 18" • Power Rating: 1,700W AES • Sensitivity: 98db
 Impedance: 8 Ohms • Voice Coil: 4.5", 115mm • Freq.
 Response: 30-1kHz • Resonant Freq.: 35 Hz • Magnet:
 Neodymium • Weight: 29.8 lbs • Frame: Cast Aluminum



SAN184.03

Size: 18" • Power Rating: 1,500W AES • Sensitivity: 96db
 Impedance: 8 Ohms • Voice Coil: 4.0", 100mm • Freq.
 Response: 30-1kHz • Resonant Freq.: 36 Hz • Magnet:
 Neodymium • Weight: 24.3 lbs • Frame: Cast Aluminum



SAF184.03

Size: 18" • Power Rating: 1,500W AES • Sensitivity: 96db
 Impedance: 4 or 8 Ohms • Voice Coil: 4.0", 100mm • Freq.
 Response: 30-1kHz • Resonant Freq.: 30 Hz • Magnet:
 Ferrite • Weight: 35.4 lbs • Frame: Cast Aluminum



SAF184.50

Size: 18" • Power Rating: 1,800W AES • Sensitivity: 95.5db
 Impedance: 8 Ohms • Voice Coil: 4.5", 115mm • Freq.
 Response: 30-1kHz • Resonant Freq.: 37 Hz • Magnet:
 Ferrite • Weight: 37 lbs • Frame: Cast Aluminum



SAF184.02

Size: 18" • Power Rating: 1,200W AES • Sensitivity: 97db
 Impedance: 8 Ohms • Voice Coil: 4.0", 100mm • Freq. Re-
 sponse: 40-1kHz • Resonant Freq.: 38 Hz • Magnet: Ferrite •
 Weight: 29.8 lbs • Frame: Cast Aluminum

15" Woofers/Subwoofers



WAF154.00

Size: 15" • Power Rating: 1,500W AES • Sensitivity: 97db
 Impedance: 8 Ohms • Voice Coil: 4.0", 100mm • Freq.
 Response: 40-3kHz • Resonant Freq.: 38 Hz • Magnet:
 Ferrite • Weight: 34 lbs • Frame: Cast Aluminum



WAN154.01

Size: 15" • Power Rating: 1,000W AES • Sensitivity: 98db
 Impedance: 8 Ohms • Voice Coil: 4.0", 100mm • Freq.
 Response: 40-1kHz • Resonant Freq.: 40 Hz • Magnet:
 Neodymium • Weight: 22 lbs • Frame: Cast Aluminum



WAF154.02

Size: 15" • Power Rating: 800W AES • Sensitivity: 96.5db
 Impedance: 8 Ohms • Voice Coil: 4.0", 100mm • Freq. Re-
 sponse: 40-1kHz • Resonant Freq.: 41 Hz • Magnet: Ferrite •
 Weight: 27.6 lbs • Frame: Cast Aluminum



SSF153.00

Size: 15" • Power Rating: 400W AES • Sensitivity: 98db
 Impedance: 8 Ohms • Voice Coil: 3.0", 75mm •
 Freq. Response: 45-2kHz • Resonant Freq.: 47



WXF15.800

Size: 15" • Power Rating: 800W AES • Sensitivity: 98db
 Impedance: 8 Ohms • Voice Coil: 4.0", 100mm • Freq. Re-
 sponse: 40-2kHz • Resonant Freq.: 50 Hz • Magnet: Ferrite •
 Weight: 22.9 lbs • Frame: Cast Aluminum



WAN153.00

Size: 15" • Power Rating: 500W AES • Sensitivity: 98.5db
 Impedance: 8 Ohms • Voice Coil: 3.0", 100mm • Freq.
 Response: 45-3kHz • Resonant Freq.: 43 Hz • Magnet:
 Neodymium • Weight: 17.6 lbs • Frame: Cast Aluminum



WAF153.00

Size: 15" • Power Rating: 500W AES • Sensitivity: 99db
 Impedance: 8 Ohms • Voice Coil: 3.0", 75mm • Freq. Re-
 sponse: 45-3kHz • Resonant Freq.: 45 Hz • Magnet: Ferrite •
 Weight: 20.8 lbs • Frame: Cast Aluminum



WXF15.400

Size: 15" • Power Rating: 400W AES • Sensitivity: 98db
 Impedance: 8 Ohms • Voice Coil: 3.0", 75mm • Freq. Re-
 sponse: 50-3kHz • Resonant Freq.: 35 Hz • Magnet: Ferrite •
 Weight: 17.6 lbs • Frame: Cast Aluminum



WSF152.50

Size: 15" • Power Rating: 250W AES • Sensitivity: 97.5db
 Impedance: 8 Ohms • Voice Coil: 2.5", 63mm • Freq. Re-
 sponse: 45-3kHz • Resonant Freq.: 45 Hz • Magnet: Ferrite •
 Weight: 12.8 lbs • Frame: Stamped Steel

12" Woofers/Subwoofers



WAN124.01

Size: 12" • Power Rating: 1000W AES • Sensitivity: 96db
 Impedance: 8 Ohms • Voice Coil: 4.0", 100mm • Freq. Response: 40-2kHz • Resonant Freq.: 38 Hz • Magnet: Neodymium • Weight: 16.5 lbs • Frame: Cast Aluminum



WAF124.01

Size: 12" • Power Rating: 1000W AES • Sensitivity: 95db
 Impedance: 8 Ohms • Voice Coil: 4.0", 100mm • Freq. Response: 40-1kHz • Resonant Freq.: 40 Hz • Magnet: Ferrite • Weight: 26.2 lbs • Frame: Cast Aluminum



WAF124.02

Size: 12" • Power Rating: 600W AES • Sensitivity: 96.5db
 Impedance: 8 Ohms • Voice Coil: 3.0", 100mm • Freq. Response: 50-2.5kHz • Resonant Freq.: 49 Hz • Magnet: Ferrite • Weight: 28.9 lbs • Frame: Cast Aluminum



WAN123.00

Size: 12" • Power Rating: 500W AES • Sensitivity: 99db
 Impedance: 8 Ohms • Voice Coil: 3.0", 75mm • Freq. Response: 50-3kHz • Resonant Freq.: 50 Hz • Magnet: Neodymium • Weight: 11.5 lbs • Frame: Cast Aluminum



WAF123.00

Size: 12" • Power Rating: 500W AES • Sensitivity: 99.5db
 Impedance: 8 Ohms • Voice Coil: 3.0", 75mm • Freq. Response: 50-2.5kHz • Resonant Freq.: 50 Hz • Magnet: Ferrite • Weight: 19.2 lbs • Frame: Cast Aluminum



WAF123.02

Size: 12" • Power Rating: 500W AES • Sensitivity: 99db
 Impedance: 8 Ohms • Voice Coil: 3.0", 75mm • Freq. Response: 45-3kHz • Resonant Freq.: 47 Hz • Magnet: Ferrite • Weight: 23.4 lbs • Frame: Cast Aluminum



WAF122.50

Size: 12" • Power Rating: 500W AES • Sensitivity: 99db
 Impedance: 8 Ohms • Voice Coil: 3.0", 75mm • Freq. Response: 45-3kHz • Resonant Freq.: 47 Hz • Magnet: Ferrite • Weight: 23.4 lbs • Frame: Cast Aluminum



WSN122.50

Size: 12" • Power Rating: 250W AES • Sensitivity: 98db
 Impedance: 8 Ohms • Voice Coil: 2.5", 65mm • Freq. Response: 50-3kHz • Resonant Freq.: 50 Hz • Magnet: Neodymium • Weight: 7.6 lbs • Frame: Steel



WSF122.50

Size: 12" • Power Rating: 250W AES • Sensitivity: 97.5db
 Impedance: 8 Ohms • Voice Coil: 2.5", 65mm • Freq. Response: 50-3kHz • Resonant Freq.: 50 Hz • Magnet: Ferrite • Weight: 13.9 lbs • Frame: Aluminum

10" Woofers/ Subwoofers



WAN103.01

Size: 10" • Power Rating: 450W AES • Sensitivity: 98db
 Impedance: 8 Ohms • Voice Coil: 3", 75mm • Freq. Response: 70-3.5kHz • Resonant Freq.: 70 Hz • Magnet: Neodymium • Weight: 17.6 lbs • Frame: Aluminum



MAF103.00

Size: 10" • Power Rating: 350W AES • Sensitivity: 99db
 Impedance: 8 Ohms • Voice Coil: 3", 75mm • Freq. Response: 70-4kHz • Resonant Freq.: 85 Hz • Magnet: Ferrite • Weight: 15.2 lbs • Frame: Aluminum



WAN102.50

Size: 10" • Power Rating: 300W AES • Sensitivity: 97db
 Impedance: 8 Ohms • Voice Coil: 2.5", 65mm • Freq. Response: 75-4.5kHz • Resonant Freq.: 75 Hz • Magnet: Neodymium • Weight: 4.6 lbs • Frame: Aluminum



WSF102.00

Size: 10" • Power Rating: 175W AES • Sensitivity: 96.5db
 Impedance: 8 Ohms • Voice Coil: 2", 50mm • Freq. Response: 60-4kHz • Resonant Freq.: 65 Hz • Magnet: Ferrite • Weight: 9 lbs • Frame: Steel

8" Woofers/ Midrange



MAF082.00

Size: 8" • Power Rating: 200W AES • Sensitivity: 98.5db
 Impedance: 8 Ohms • Voice Coil: 2", 50mm • Freq. Response: 90-5kHz • Resonant Freq.: 75 Hz • Magnet: Ferrite • Weight: 9 lbs • Frame: Aluminum



WSF081.82

Size: 8" • Power Rating: 150W AES • Sensitivity: 96db
 Impedance: 8 Ohms • Voice Coil: 2", 50mm • Freq. Response: 80-5kHz • Resonant Freq.: 79 Hz • Magnet: Ferrite • Weight: 5 lbs • Frame: Steel

5"-6.5" Woofers



WAN061.80

Size: 6.5" • Power Rating: 200W AES • Sensitivity: 93.5db
 Impedance: 8 Ohms • Voice Coil: 1.8", 45mm • Freq. Response: 60-5.5kHz • Resonant Freq.: 60 Hz • Magnet: Neodymium • Weight: 2.9 lbs • Frame: Aluminum



MAF061.50

Size: 6.5" • Power Rating: 120W AES • Sensitivity: 96.5db
 Impedance: 8 Ohms • Voice Coil: 1.5", 38mm • Freq. Response: 150-6kHz • Resonant Freq.: 173 Hz • Magnet: Ferrite • Weight: 5.1 lbs • Frame: Aluminum



WSF061.52

Size: 6.5" • Power Rating: 125W AES • Sensitivity: 94.5db
 Impedance: 8 Ohms • Voice Coil: 1.5", 38mm • Freq. Response: 90-5kHz • Resonant Freq.: 90 Hz • Magnet: Ferrite • Weight: 4.2 lbs • Frame: Stamped Steel

2"-4" Full Range



FSN041.00

Size: 4" • Power Rating: 40W AES • Sensitivity: 91db
 Impedance: 8 Ohms • Voice Coil: 1.0", 25mm • Freq.
 Response: 110-18kHz • Resonant Freq.: 111 Hz • Magnet:
 Neodymium • Weight: 0.39 lbs • Frame: Steel



FSN030.72

Size: 3" • Power Rating: 30W AES • Sensitivity: 90db
 Impedance: 8 Ohms • Voice Coil: .75", 20mm • Freq.
 Response: 120-20kHz • Resonant Freq.: 127 Hz • Magnet:
 Neodymium • Weight: 0.43 lbs • Frame: Steel



FSN021.02

Size: 2" • Power Rating: 25W AES • Sensitivity: 83db
 Impedance: 8 Ohms • Voice Coil: 1.0", 25mm • Freq.
 Response: 140-20kHz • Resonant Freq.: 151 Hz • Magnet:
 Neodymium • Weight: 0.33 lbs • Frame: Steel

Coaxial Speakers



CAN123.00TH

Size: 12" • Power Rating: 350W LF/80W HF AES • Sensitiv-
 ity: 99db • Impedance: 8 Ohms • Voice Coil: 3", 75mm LF/3",
 75mm HF • Freq. Response: 45-18kHz • Resonant Freq.:
 46 Hz • Magnet: Neodymium • Weight: 10.8 lbs • Frame:
 Aluminum • Includes horn



CAN123.00T

Size: 12" • Power Rating: 350W LF/80W HF AES • Sensitiv-
 ity: 99db • Impedance: 8 Ohms • Voice Coil: 3", 75mm LF/3",
 75mm HF • Freq. Response: 45-18kHz • Resonant Freq.:
 46 Hz • Magnet: Neodymium • Weight: 10.8 lbs • Frame:
 Aluminum



CSF082.00K Coaxial

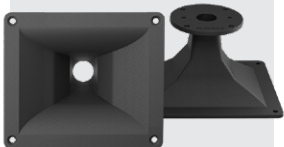
Size: 8" • Power Rating: 200W AES (Low)/ 35W AES (High)
 • Sensitivity: 97db • Impedance: 8 Ohms • Voice Coil: 2.5"
 (Low)/ 1.4", 35mm (High) 65mm • Freq. Response: 75-
 20kHz • Resonant Freq.: 76 Hz • Magnet: Ferrite • Weight:
 6.6 lbs • Frame: Steel



CSF061.21-8

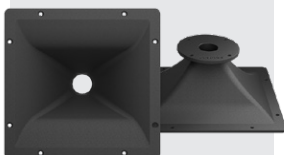
Size: 6.5" • Power Rating: 50W AES • Sensitivity: 92.5db
 Impedance: 8 Ohms • Voice Coil: 1.2", 30mm • Freq.
 Response: 80-22kHz • Resonant Freq.: 89 Hz • Magnet:
 Ferrite • Weight: 2 lbs • Frame: Stamped Steel

1" High Frequency Horns



HD1004

- 1-inch exit
- Aluminum construction
- 90° x 60°; 1200Hz cut-off
- 24.2"W x 19.8"H x 9.4"D
- 1.1 lbs.



HD1403

- 1.4-inch exit
- Aluminum construction
- 80° x 60°; 900Hz cut-off
- 11.4"W x 11"H x 5.2"D
- 3.3 lbs.

1.4" High Frequency Drivers



DN14.300T

Size: 1.4" • Power Rating: 110W AES • Sensitivity: 109db
 Impedance: 8 Ohms • Voice Coil: 3", 75mm • Freq.
 Response: 500-20kHz • Magnet: Neodymium • Diaphragm:
 Titanium • Weight: 4.4lbs



DN14.25T

Size: 1.4" • Power Rating: 80W AES • Sensitivity: 108db
 Impedance: 8 Ohms • Voice Coil: 2.5", 65mm • Freq. Re-
 sponse: 1000-20kHz • Magnet: Neodymium • Diaphragm:
 Titanium • Weight: 2.87 lbs



DF14.30T

Size: 1.4" • Power Rating: 110W AES • Sensitivity: 107.5db
 Impedance: 8 Ohms • Voice Coil: 3.0", 75mm • Freq.
 Response: 500-18kHz • Magnet: Ferrite • Diaphragm:
 Titanium • Weight: 9.3 lbs

1.0" High Frequency Drivers



DN10.172KS

Size: 1" • Power Rating: 55W AES • Sensitivity: 110db
 Impedance: 8 Ohms • Voice Coil: 3.3", 85mm • Freq. Re-
 sponse: 1200-20kHz • Magnet: Neodymium • Diaphragm:
 polyimide • Weight: 1.98 lbs • Screw-on



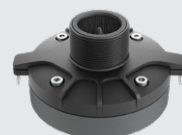
DF10.172KS

Size: 1" • Power Rating: 60W AES • Sensitivity: 108.5db
 Impedance: 8 Ohms • Voice Coil: 1.7", 44mm • Freq. Re-
 sponse: 1000-20kHz • Magnet: Neodymium • Diaphragm:
 polyimide • Weight: 3.7 lbs • Screw-on



DF10.142LKS

Size: 1" • Power Rating: 35W AES • Sensitivity: 106db
 Impedance: 8 Ohms • Voice Coil: 1.0", 25mm • Freq.
 Response: 1500-20kHz • Magnet: Ferrite • Diaphragm:
 polyimide • Weight: 2.2 lbs • Screw-on



DF10.101LS

Size: 1" • Power Rating: 20W AES • Sensitivity: 107db
 Impedance: 8 Ohms • Voice Coil: 1.0", 25mm • Freq.
 Response: 1500-18kHz • Magnet: Ferrite • Diaphragm:
 High-temp polymer • Weight: 1.7 lbs • Screw-on

1.0" High Frequency Drivers



DF10.172K

Size: 1" • Power Rating: 60W AES • Sensitivity: 108.5db
Impedance: 8 Ohms • Voice Coil: 1.7", 44mm • Freq.
Response: 1000-20kHz • Magnet: Ferrite • Diaphragm:
polyimide • Weight: 3.5 lbs



DF10.172M

Size: 1" • Power Rating: 50W AES • Sensitivity: 108db
Impedance: 8 Ohms • Voice Coil: 1.7", 44mm • Freq.
Response: 1000-20kHz • Magnet: Ferrite • Diaphragm:
polyester • Weight: 3.7 lbs



DF10.142LK

Size: 1" • Power Rating: 35W AES • Sensitivity: 106db
Impedance: 8 Ohms • Voice Coil: 1.4", 35mm • Freq.
Response: 1500-20kHz • Magnet: Ferrite • Diaphragm:
polyimide • Weight: 2.0 lbs



DF10.101L

Size: 1" • Power Rating: 20W AES • Sensitivity: 107db
Impedance: 8 Ohms • Voice Coil: 1.0", 25mm • Freq.
Response: 1500-18kHz • Magnet: Ferrite • Diaphragm:
High-temp polymer • Weight: 1.7 lbs

1" Compression Tweeters



BF10.10LA

Size: 1" • Power Rating: 20W AES • Sensitivity: 106db
Impedance: 8 Ohms • Voice Coil: 1.0", 25mm • Freq.
Response: 2500-18kHz • Recommended Crossover: 5k Hz •
Magnet: Ferrite • Weight: 1.3 lbs

1"- 1.3" Tweeters



TN131.00

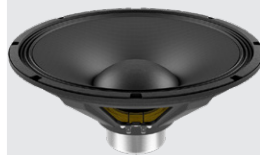
Size: 1.3" • Power Rating: 15W AES • Sensitivity: 92db
Impedance: 8 Ohms • Voice Coil: .75", 20mm • Freq. Re-
sponse: 1250-30kHz • Resonant Freq.: 1250 Hz • Magnet:
Neodymium • Weight: 0.03 lbs



TN100.70

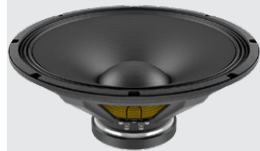
Size: 1.0" • Power Rating: 7.5W AES • Sensitivity: 90db
Impedance: 8 Ohms • Voice Coil: 1", 25mm • Freq. Re-
sponse: 1500-30kHz • Resonant Freq.: 1500 Hz • Magnet:
Neodymium • Weight: 0.08 lbs

15" Bass Guitar Speakers



NBASS15-30

Size: 15" • Power Rating: 400W AES • Sensitivity: 98db
Impedance: 8 Ohms • Voice Coil: 3", 75mm • Freq.
Response: 40-4kHz • Resonant Freq.: 42 Hz • Magnet:
Neodymium • Weight: 7.7 lbs • Frame: Steel



FBASS15-20

Size: 15" • Power Rating: 200W AES • Sensitivity: 98db
Impedance: 8 Ohms • Voice Coil: 2", 50mm • Freq. Re-
sponse: 40-4kHz • Resonant Freq.: 40 Hz • Magnet: Ferrite •
Weight: 9.1 lbs • Frame: Steel

12" Bass Guitar Speakers



NBASS12-30

Size: 12" • Power Rating: 400W AES • Sensitivity: 98db
Impedance: 8 & 16 Ohms • Voice Coil: 2", 50mm • Freq.
Response: 50-3kHz • Resonant Freq.: 46 Hz • Magnet:
Neodymium • Weight: 6.5 lbs • Frame: Steel



FBASS12-20

Size: 12" • Power Rating: 150W AES • Sensitivity: 97db
Impedance: 8 Ohms • Voice Coil: 2", 50mm • Freq. Re-
sponse: 50-3kHz • Resonant Freq.: 52 Hz • Magnet: Ferrite •
Weight: 8 lbs • Frame: Steel

10" Bass Guitar Speakers



NBASS10-20

Size: 10" • Power Rating: 150W AES • Sensitivity: 95db
Impedance: 8 Ohms • Voice Coil: 2", 50mm • Freq.
Response: 50-3kHz • Resonant Freq.: 49 Hz • Magnet:
Neodymium • Weight: 2.9 lbs • Frame: Steel



NBASS10-18

Size: 10" • Power Rating: 150W AES • Sensitivity: 96db
Impedance: 8 Ohms • Voice Coil: 1.8", 45mm • Freq. Re-
sponse: 60-5kHz • Resonant Freq.: 62 Hz • Magnet: Ferrite •
Weight: 5.9 lbs • Frame: Steel

8" Bass Guitar Speakers



NBASS08-20

Size: 8" • Power Rating: 200W AES • Sensitivity: 92db
Impedance: 8 Ohms • Voice Coil: 2", 50mm • Freq.
Response: 55-4kHz • Resonant Freq.: 55 Hz • Magnet:
Neodymium • Weight: 2.6 lbs • Frame: Steel



FBASS08-18

Size: 8" • Power Rating: 150W AES • Sensitivity: 93db
Impedance: 8 Ohms • Voice Coil: 1.8", 45mm • Freq. Re-
sponse: 50-5kHz • Resonant Freq.: 53 Hz • Magnet: Ferrite •
Weight: 6.6 lbs • Frame: Steel

21" Subwoofers



NSW6021-6

Size: 21" • Power Rating: 2500W RMS • Sensitivity: 97db
Impedance: 6 Ohms • Voice Coil: 6", 152mm • Freq. Response: 25-6kHz • Resonant Freq.: 29 Hz • Magnet Weight: 45 oz Neodymium • Frame: Cast Aluminum

NEODYMIUM

18" Subwoofers



NSW4018-8

Size: 18" • Power Rating: 1600W RMS • Sensitivity: 96.6db
Impedance: 8 Ohms • Voice Coil: 4", 102mm • Freq. Response: 27-1.3kHz • Resonant Freq.: 36 Hz • Magnet Weight: 33 oz Neodymium • Frame: Cast Aluminum

NEODYMIUM



Kilomax Pro18A

Size: 18" • Power Rating: 1,250W RMS • Sensitivity: 95.8db
Impedance: 8 Ohms • Voice Coil: 4", 101.6mm • Freq. Response: 33-300 Hz • Resonant Freq.: 32 Hz • Magnet Weight: 109 oz • Frame: Cast Aluminum



Kappa Pro 18LF

Size: 18" • Power Rating: 800W RMS • Sensitivity: 98db
Impedance: 8 Ohms • Voice Coil: 3", 76.2mm • Freq. Response: 38-700Hz • Resonant Freq.: 32 Hz • Magnet Weight: 120 oz • Frame: Cast Aluminum



Sigma Pro 18A

Size: 18" • Power Rating: 650W RMS • Sensitivity: 99db
Impedance: 8(A) Ohms • Voice Coil: 3", 76.2mm • Freq. Response: 41-2.4kHz • Resonant Freq.: 28 Hz • Magnet Weight: 120 oz • Frame: Cast Aluminum



Delta Pro 18A

Size: 18" • Power Rating: 500W RMS • Sensitivity: 96db
Impedance: 8(A) Ohms • Voice Coil: 2.5", 63.5mm • Freq. Response: 37-250Hz • Resonant Freq.: 28 Hz • Magnet Weight: 67 oz • Frame: Cast Aluminum

15" Subwoofers



Kilomax Pro 15A

Size: 15" • Power Rating: 1,250W RMS • Sensitivity: 95.5db
Impedance: 8 Ohms • Voice Coil: 4", 101.6mm • Freq. Response: 44-800 Hz • Resonant Freq.: 41 Hz • Magnet Weight: 109 oz • Frame: Cast Aluminum



Omega Pro 15A

Size: 15" • Power Rating: 800W RMS • Sensitivity: 97.3db
Impedance: 8 Ohms • Voice Coil: 4", 101.6mm • Freq. Response: 51-1.7kHz • Resonant Freq.: 33 Hz • Magnet Weight: 109 oz • Frame: Cast Aluminum



LAB 15

Size: 15" • Power Rating: 600W RMS • Sensitivity: 88.5db
Impedance: 8 Ohms • Voice Coil: 3", 76.2mm • Freq. Response: 20-125Hz • Resonant Freq.: 27.82 Hz • Magnet Weight: 109 oz • Frame: Cast Aluminum



Kappa Pro 15LFA

Size: 15" • Power Rating: 600W RMS • Sensitivity: LFA-97.8db/LFC-96.8db • Impedance: 8 Ohms • Voice Coil: 3", 76.2mm • Freq. Response: 38-1.8kHz • Resonant Freq.: 35 Hz • Magnet Weight: 120 oz • Frame: Cast Aluminum



Kappa 15LFA

Size: 15" • Power Rating: 600W RMS • Sensitivity: 99db
Impedance: 8 Ohms • Voice Coil: 3", 76.2mm • Freq. Response: 38-2.7kHz • Resonant Freq.: 39 Hz • Magnet Weight: 95 oz • Frame: Stamped Steel



Kappa Pro 15A

Size: 15" • Power Rating: 500W RMS • Sensitivity: 101db
Impedance: 8 Ohms • Voice Coil: 3", 76.2mm • Freq. Response: 46-4kHz • Resonant Freq.: 47 Hz • Magnet Weight: 80 oz • Frame: Cast Aluminum

15" Bass/Mid Bass



Delta 15LFA

Size: 15" • Power Rating: 500W RMS • Sensitivity: 96db
Impedance: 8 Ohms • Voice Coil: 2.5", 63.5mm • Freq.
Response: 42-3.2kHz • Resonant Freq.: 41 Hz • Magnet
Weight: 56 oz. • Frame: Stamped Steel



Kappalite 3015LF

Size: 15" • Power Rating: 450W RMS
Sensitivity: 98.4db • Impedance: 8 Ohms
Voice Coil: 3", 76.2mm • Frequency Response: 40-1.5kHz
Resonant Freq.: 42 Hz • Magnet Weight: 11 oz. • Frame:
Cast Aluminum

NEODYMIUM



Kappalite 3015

Size: 15" • Power Rating: 450W RMS
Sensitivity: 100.8db • Impedance: 8 Ohms • Voice Coil: 3",
76.2mm • Frequency Response: 40-4kHz • Resonant Freq.:
45 Hz • Magnet Weight: 11 oz. • Frame: Cast Aluminum

NEODYMIUM



Delta Pro 15A

Size: 15" • Power Rating: 400W RMS • Sensitivity:
101.6db • Impedance: 8 Ohms • Voice Coil: 2.5",
63.5mm • Freq. Response: 54-4.2kHz • Resonant
Freq.: 42 Hz • Magnet Weight: 80 oz • Frame: Cast
Aluminum



Deltalite II 2515

Size: 15" • Power Rating: 300W RMS • Sensitivity: 99.2db
Impedance: 8 Ohms • Voice Coil: 2.5", 63.5mm • Frequency
Response: 54-3.7kHz • Resonant Freq.: 42 Hz • Magnet
Weight: 7 oz. • Frame: Cast Aluminum

NEODYMIUM

15" All-Purpose Speakers



Kappa 15A/15C

Size: 15" • Power Rating: 450W RMS • Sensitivity: 100.5db (15A)/
98.1 db (15C) • Impedance: 8 Ohms • Voice Coil: 3", 76.2mm •
Freq. Response: 52-2.3kHz • Resonant Freq.: 33 Hz • Magnet
Weight: 80 oz. • Frame: Stamped Steel



Delta 15A/15B

Size: 15" • Power Rating: 400W RMS • Sensitivity: 100db
Impedance: 8 or 16 Ohms • Voice Coil: 2.5", 63.5mm •
Freq. Response: 48-4kHz • Resonant Freq.: 40 Hz • Magnet
Weight: 56 oz. • Frame: Stamped Steel



Beta 15A

Size: 15" • Power Rating: 300W RMS • Sensitivity: 98.2db
Impedance: 8 Ohms • Voice Coil: 2.0", 50.8mm • Freq.
Response: 45-3.7kHz • Resonant Freq.: 35 Hz • Magnet
Weight: 34 oz. • Frame: Stamped Steel



Alpha 15A

Size: 15" • Power Rating: 200W RMS • Sensitivity: 97db
Impedance: 8 Ohms • Voice Coil: 1.5", 38.1mm • Freq.
Response: 46-3.5kHz • Resonant Freq.: 41 Hz • Magnet
Weight: 25 oz. • Frame: Stamped Steel

12" Subwoofer



LAB 12A/C

Size: 12" • Power Rating: 400W RMS • Sensitivity: 89.2db
Impedance: 6 or 4 Ohms • Voice Coil: 2.5", 63.5mm •
Frequency Response: 25-125 Hz • Resonant Freq.: 22 Hz
Magnet Weight: 160 oz. • Frame: Cast Aluminum

12" Bass/Mid-Bass



Kappa Pro 12A

Size: 12" • Power Rating: 500W RMS • Sensitivity: 97.1db
Impedance: 8 Ohms • Voice Coil: 3", 76.2mm • Freq.
Response: 57-2.8kHz • Resonant Freq.: 37 Hz • Magnet
Weight: 80 oz. • Frame: Cast Aluminum



Delta 12LFA/12LFC

Size: 12" • Power Rating: 500W RMS • Sensitivity: 94.6db
Impedance: 4 or 8 Ohms • Voice Coil: 2.5", 63.5mm • Freq.
Response: 44-3kHz • Resonant Freq.: 51 Hz • Magnet
Weight: 56 oz. • Frame: Stamped Steel



Kappa 12A

Size: 12" • Power Rating: 450W RMS • Sensitivity: 99.3db
Impedance: 8 Ohms • Voice Coil: 3", 76.2mm • Freq.
Response: 62-4.2kHz • Resonant Freq.: 45 Hz • Magnet
Weight: 80 oz. • Frame: Stamped Steel



Kappalite 3012LF

Size: 12" • Power Rating: 450W RMS • Sensitivity: 95.5db
Impedance: 8 Ohms • Voice Coil: 3", 76.2mm • Freq.
Response: 46-2.0kHz • Resonant Freq.: 37.02 Hz
Magnet Weight: 11 oz. • Frame: Cast Aluminum

NEODYMIUM



Kappalite 3012H0

Size: 12" • Power Rating: 450W RMS • Sensitivity: 100.5db
Impedance: 8 Ohms • Voice Coil: 3", 76.2mm • Freq.
Response: 51-3.5kHz • Resonant Freq.: 52 Hz
Magnet Weight: 11 oz. • Frame: Cast Aluminum

NEODYMIUM



Delta Pro 12A

Size: 12" • Power Rating: 400W RMS • Sensitivity: 99.2db
Impedance: 8 Ohms • Voice Coil: 2.5", 63.5mm • Freq.
Response: 52-4.5kHz • Resonant Freq.: 51 Hz • Magnet
Weight: 80 oz. • Frame: Cast Aluminum



Deltalite II 2512

Size: 12" • Power Rating: 250W RMS • Sensitivity: 99.9db
Impedance: 8 Ohms • Voice Coil: 2.5", 63.5mm • Freq.
Response: 48-4kHz • Resonant Freq.: 37 Hz
Magnet Weight: 7 oz. • Frame: Cast Aluminum

NEODYMIUM

12" All-Purpose Speakers



Delta 12A/12B

Size: 12" • Power Rating: 400W RMS • Sensitivity: 98.3db
Impedance: 8 or 16 Ohms • Voice Coil: 2.5", 63.5mm • Freq.
Response: 54-5kHz • Resonant Freq.: 55 Hz • Magnet
Weight: 56 oz. • Frame: Stamped Steel



Beta 12A

Size: 12" • Power Rating: 250W RMS • Sensitivity: 98db
Impedance: 8 Ohms • Voice Coil: 2.0", 50.8mm • Freq.
Response: 43-3.8kHz • Resonant Freq.: 47 Hz • Magnet
Weight: 38 oz. • Frame: Stamped Steel



Alpha 12A

Size: 12" • Power Rating: 150W RMS • Sensitivity: 95.6db
Impedance: 8 Ohms • Voice Coil: 1.5", 38.1mm • Freq.
Response: 51-4.3kHz • Resonant Freq.: 49 Hz • Magnet
Weight: 20 oz. • Frame: Stamped Steel

10" Bass/Mid Bass



KL3010H0

Size: 10" • Power Rating: 800W RMS • Sensitivity: 98.8db
Impedance: 8 Ohms • Voice Coil: 3", 76.2mm • Freq.
Response: 400-4kHz • Resonant Freq.: 61.9 Hz • Magnet
Weight: 11 oz. Neodymium • Frame: Cast Aluminum

NEODYMIUM



KL3010LF

Size: 10" • Power Rating: 900W RMS • Sensitivity: 98.8db
Impedance: 8 Ohms • Voice Coil: 3", 76.2mm • Freq.
Response: 42-1.6kHz • Resonant Freq.: 44.8 Hz • Magnet
Weight: 11 oz. Neodymium • Frame: Cast Aluminum

NEODYMIUM



Kappa Pro 10LF

Size: 10" • Power Rating: 600W RMS • Sensitivity: 91.6db
Impedance: 8 Ohms • Voice Coil: 3", 76.2mm • Freq.
Response: 47-2kHz • Resonant Freq.: 39 Hz • Magnet Weight:
17.2 lbs. • Frame: Cast Aluminum



Kappa Pro 10A

Size: 10" • Power Rating: 500W RMS • Sensitivity: 97db
Impedance: 8 Ohms • Voice Coil: 3", 76.2mm • Freq.
Response: 102-2kHz • Resonant Freq.: 46 Hz • Magnet
Weight: 80 oz. • Frame: Cast Aluminum

10" Line Array



Beta 10CBMRA

Size: 10" • Power Rating: 200W RMS • Sensitivity: 99.6db
Impedance: 8 Ohms • Voice Coil: 2.0", 63.5mm • Freq.
Response: 300-4kHz • Resonant Freq.: 326 Hz • Magnet
Weight: 34 oz. • Frame: Stamped Steel

10" All Purpose Woofers



Delta 10A/10B

Size: 10" • Power Rating: 350W RMS • Sensitivity: 98.8db
Impedance: 8 or 16 Ohms • Voice Coil: 2.5" • Freq. Response:
63-3.7kHz • Resonant Freq.: 66 Hz • Magnet Weight: 56 oz.
Frame: Stamped Steel



Beta 10A

Size: 10" • Power Rating: 250W RMS • Sensitivity: 97db
Impedance: 8 Ohms • Voice Coil: 2.0", 50.8mm • Freq.
Response: 51-3.8kHz • Resonant Freq.: 53 Hz • Magnet
Weight: 34 oz. • Frame: Stamped Steel



Deltalite II 2510

Size: 10" • Power Rating: 250W RMS • Sensitivity: 97.3db
Impedance: 8 Ohms • Voice Coil: 2.5", 63.5mm • Freq.
Response: 60-4kHz • Resonant Freq.: 37 Hz • Magnet
Weight: 7 oz. • Frame: Cast Aluminum

NEODYMIUM



Alpha 10A

Size: 10" • Power Rating: 150W RMS • Sensitivity: 95.6db
Impedance: 8 Ohms • Voice Coil: 1.5", 38.1mm • Freq.
Response: 57-4.5kHz • Resonant Freq.: 50 Hz • Magnet
Weight: 20 oz. • Frame: Stamped Steel

6" - 8" All-Purpose Woofers



Beta 8A

Size: 8" • Power Rating: 225W RMS • Sensitivity: 95.1db
Impedance: 8 Ohms • Voice Coil: 2.0", 50.8mm • Freq.
Response: 78-4.5kHz • Resonant Freq.: 65 Hz • Magnet
Weight: 34 oz. • Frame: Stamped Steel



Alpha 8A

Size: 8" • Power Rating: 125W RMS • Sensitivity: 94db
Impedance: 8 Ohms • Voice Coil: 1.5", 38.1mm • Freq.
Response: 58-5kHz • Resonant Freq.: 73 Hz • Magnet
Weight: 20 oz. • Frame: Stamped Steel



Beta 6A

Size: 6.5" • Power Rating: 175W RMS • Sensitivity: 94db
Impedance: 8 Ohms • Voice Coil: 2.0", 50.8mm • Freq.
Response: 95-4kHz • Resonant Freq.: 122.57 Hz • Magnet
Weight: 30 oz. • Frame: Stamped Steel



Alpha 6A/6C

Size: 6" • Power Rating: 100W RMS • Sensitivity: 93.6db
Impedance: 4 or 8 Ohms • Voice Coil: 1.5", 38.1mm • Freq.
Response: 85-6kHz • Resonant Freq.: 118 Hz • Magnet
Weight: 20 oz. • Frame: Stamped Steel

Coaxial Speakers



KL3015CX

NEODYMIUM

Size: 15" • Power Rating: 400W RMS • Sensitivity: 96.7db
Impedance: 8 Ohms • Voice Coil: 2.0", 50.8mm • Freq.
Response: 40-4kHz • * Resonant Freq.: 38 Hz • Magnet
Weight: 11 oz. Neodymium • Frame: Cast Aluminum
**HF driver sold seperately*



KL3012CX

NEODYMIUM

Size: 12" • Power Rating: 400W RMS • Sensitivity: 95.4db
Impedance: 8 Ohms • Voice Coil: 3.0", 76mm • Freq.
Response: 40-3.20kHz • * Resonant Freq.: 42 Hz • Magnet
Weight: 11 oz. Neodymium • Frame: Cast Aluminum
**HF driver sold seperately*



KL3010CX

NEODYMIUM

Size: 10" • Power Rating: 400W RMS • Sensitivity: 92db
Impedance: 8 Ohms • Voice Coil: 3.0", 76mm • Freq.
Response: 50-3.70kHz • * Resonant Freq.: 52 Hz • Magnet
Weight: 11 oz. Neodymium • Frame: Cast Aluminum
**HF driver sold seperately*



Beta 12CX

Size: 12" • Power Rating: 250W RMS • Sensitivity: 97.3db
Impedance: 8 Ohms • Voice Coil: 2.0", 50.8mm • Freq.
Response: 66-20kHz • * Resonant Freq.: 43 Hz • Magnet
Weight: 38 oz. • Frame: Stamped Steel
**with HF driver sold seperately*



Beta 10CX

Size: 10" • Power Rating: 250W RMS • Sensitivity: 94.3db
Impedance: 8 Ohms • Voice Coil: 2.0", 50.8mm • Freq.
Response: 58-20kHz • * Resonant Freq.: 49 Hz • Magnet
Weight: 38 oz. • Frame: Stamped Steel
**with HF driver sold seperately*



Beta 8CX

Size: 8" • Power Rating: 250W RMS • Sensitivity: 92.8db
Impedance: 8 Ohms • Voice Coil: 2.0", 50.8mm • Freq.
Response: 74-20kHz • * Resonant Freq.: 65.52 Hz • Magnet
Weight: 38 oz. • Frame: Stamped Steel
**with HF driver sold seperately*

2" - 5" Woofers



Alpha 3

Size: 3" • Power Rating: 30W RMS • Sensitivity: 88.6db
Impedance: 8 Ohms • Voice Coil: 0.787", 20mm • Freq.
Response: 150-20kHz • Resonant Freq.: 118 Hz • Magnet
Weight: 8 oz. • Frame: stamped steel



Alpha 4.8/Alpha 4.4

Size: 4" • Power Rating: 55W RMS • Sensitivity: 88db
Impedance: 8 Ohms • Voice Coil: 1.5", 38mm • Freq.
Response: 100-12kHz • Resonant Freq.: 123 Hz • Magnet
Weight: 10 oz. • Frame: stamped steel



Alpha 5

Size: 5" • Power Rating: 125W RMS • Sensitivity: 89.4db •
Impedance: 4 or 8 Ohms • Voice Coil: 1.0", 25mm • Freq.
Response: 87-3.5kHz • Resonant Freq.: 87 Hz • Magnet
Weight: 20 oz. • Frame: stamped steel

15" Bass Guitar Speakers



Legend CB15

Size: 15" • Power Rating: 300W RMS • Sensitivity:
98db • Impedance: 8 Ohms • Voice Coil: 2.5",
63.5mm • Freq. Response: 47-3kHz • Magnet
Weight: 80 oz. • Frame: Cast Aluminum



Legend CA154

Size: 15" • Power Rating: 300W RMS • Sensitivity:
96.9db • Impedance: 8 Ohms • Voice Coil: 2.5",
63.5mm • Freq. Response: 45-3kHz • Magnet
Weight: 56 oz. • Frame: Stamped Steel



Legend BP1525

Size: 15" • Power Rating: 350W RMS • Sensitivity:
96.6db • Impedance: 8 Ohms • Voice Coil: 2.5",
63.5mm • Freq. Response: 32-2.1kHz • Magnet
Weight: 56 oz. • Frame: Stamped Steel

12" Bass Guitar Speakers



Legend BP122

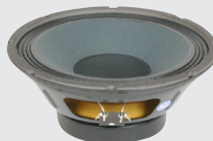
Size: 12" • Power Rating: 250W RMS • Sensitivity: 94.1db
Impedance: 8 Ohms • Voice Coil: 2.0", 50.8mm • Freq.
Response: 35-2.3kHz • Magnet Weight: 38 oz. • Frame:
Stamped Steel



Basslite S2012

Size: 12" • Power Rating: 150W RMS • Sensitivity: 97db
Impedance: 8 Ohms • Voice Coil: 2.0", 50.8mm • Freq.
Response: 49 - 4.5kHz • Magnet Weight: 4 oz. • Frame:
Stamped Steel

10" Bass Guitar Speakers



Legend BP102

Size: 10" • Power Rating: 200W RMS • Sensitivity:
92db • Impedance: 4 or 8 Ohms • Voice Coil: 2.0",
50.8mm • Freq. Response: 40-2kHz • Magnet Weight:
38 oz. • Frame: Stamped Steel



Legend CA10

Size: 10" • Power Rating: 200W RMS • Sensitivity:
96.3db • Impedance: 8 or 32 ohms • Voice Coil: 2.0",
50.8mm • Freq. Response: 50-3kHz • Magnet Weight:
38 oz. • Frame: Die Cast Aluminum



Legend B810

Size: 10" • Power Rating: 150W RMS • Sensitivity:
92.7db • Impedance: 32 ohms • Voice Coil: 2.0",
50.8mm • Freq. Response: 49-5.1kHz • Magnet
Weight: 30 oz. • Frame: Stamped Steel



Legend CA1059.8

Size: 10" • Power Rating: 350W RMS • Sensitivity:
98.3db • Impedance: 8 ohms • Voice Coil: 2.0",
50.8mm • Freq. Response: 50-3.4kHz • Magnet
Weight: 59 oz. • Frame: Die Cast Aluminum

10" Bass Guitar Speakers



Basslite S2010

NEODYMIUM

Size: 10" • Power Rating: 150W RMS • Sensitivity: 96.2db
• Impedance: 8 Ohms • Voice Coil: 2.0", 50.8mm • Freq.
Response: 54 - 4kHz • Magnet Weight: 4 oz. • Frame:
Stamped Steel

Basslite SC10.16

NEODYMIUM

Size: 10" • Power Rating: 150W RMS • Sensitivity: 94.3db
• Impedance: 16 Ohms • Voice Coil: 2.0", 50.8mm • Freq.
Response: 50 - 4.2kHz • Magnet Weight: 4 oz. Neodymium
• Frame: Stamped Steel



Legend 1218

Size: 12" • Power Rating: 150W RMS • Sensitivity: 98.8db
• Impedance: 8 Ohms • Voice Coil: 2.0", 50.8mm • Freq.
Response: 80-4.2kHz • Magnet Weight: 38 oz. • Frame:
Stamped Steel

Swamp Thang

Size: 12" • Power Rating: 150W RMS • Sensitivity: 102db •
Impedance: 8 or 16 ohms • Voice Coil: 2", 50.8mm • Freq.
Response: 70-5kHz • Magnet Weight: 59 oz. • Frame:
Stamped Steel

Wheelhouse 150

NEODYMIUM

Size: 12" • Power Rating: 150W RMS • Sensitivity:
101.4db • Impedance: 8 ohms • Voice Coil: 2.5", 63.5mm
• Freq. Response: 80-3.8kHz • Resonant Freq: 82 Hz. •
Magnet Weight: 11 oz. neodymium • Frame: Stamped
Steel

Tonkerlite

NEODYMIUM

Size: 12" • Power Rating: 125W RMS • Sensitivity:
101db • Impedance: 8 or 16 ohms • Voice Coil: 2",
50.8mm • Freq. Response: 70-5.5kHz • Magnet
Weight: 4 oz. Neodymium • Frame: Stamped Steel

Lil' Texas

Size: 12" • Power Rating: 125W RMS • Sensitivity: 101db •
Impedance: 8 or 16 ohms • Voice Coil: 2", 50.8mm • Freq.
Response: 70-5.5kHz • Magnet Weight: 4 oz. Neodymium
• Frame: Stamped Steel

Legend V128

Size: 12" • Power Rating: 120W RMS • Sensitivity: 100.9db
• Impedance: 8 Ohms • Voice Coil: 1.75", 44.5mm • Freq.
Response: 80-5kHz • Magnet Weight: 38 oz. • Frame:
Stamped Steel

Man O War

Size: 12" • Power Rating: 120W RMS • Sensitivity: 102db
(8 ohm) 105.6db (16 ohm) • Impedance: 8 or 16 ohms •
Voice Coil: 1.75", 44.5mm • Freq. Response: 70-5.5kHz •
Magnet Weight: 38 oz. • Frame: Stamped Steel

Red White & Blues

Size: 12" • Power Rating: 120W RMS • Sensitivity: 101db
• Impedance: 8 ohms • Voice Coil: 1.75", 44.5mm • Freq.
Response: 70-4.5kHz • Magnet Weight: 38 oz. • Frame:
Stamped Steel

The Wizard

Size: 12" • Power Rating: 75W RMS • Sensitivity: 103db (8
ohm) • Impedance: 8 ohms • Voice Coil: 1.5", 38.1mm • Freq.
Response: 70-5.5kHz • Magnet Weight: 56 oz. • Frame:
Stamped Steel

Legend 1258

Size: 12" • Power Rating: 75W RMS • Sensitivity: 100.1db
• Impedance: 8 Ohms • Voice Coil: 1.5", 38.1mm • Freq.
Response: 80-4kHz • Magnet Weight: 34 oz. • Frame:
Stamped Steel

15" Guitar Speakers



Legend 1518

Size: 15" • Power Rating: 150W RMS • Sensitivity:
102.2db • Impedance: 8 Ohms • Voice Coil: 2.0",
50.8mm • Freq. Response: 60-4kHz • Magnet
Weight: 59 oz. • Frame: Stamped Steel

12" Guitar Speakers



Double-T 12

Size: 12" • Power Rating: 300W RMS • Sensitivity: 100.2db •
Impedance: 8 ohms • Voice Coil: 4.0", 100mm • Freq. Response:
50-3.8kHz • Resonant Freq: 53Hz • Magnet Weight: 11 oz.
neodymium • Frame: Cast Aluminum

Legend EM12

Size: 12" • Power Rating: 200W RMS • Sensitivity:
101.1db • Impedance: 8 Ohms • Voice Coil: 2.5",
62mm • Freq. Response: 60-4.9kHz • Magnet
Weight: 80 oz. • Frame: Cast Aluminum

Legend EM12N

Size: 12" • Power Rating: 200W RMS • Sensitivity: 99.9db
• Impedance: 8 Ohms • Voice Coil: 2.5", 64mm • Freq.
Response: 60-4.2kHz • Magnet Weight: 11 oz. • Frame:
Stamped Steel

The Tonker

Size: 12" • Power Rating: 150W RMS • Sensitivity:
102db • Impedance: 8 or 16 ohms • Voice Coil: 2",
50.8mm • Freq. Response: 70-5.5kHz • Magnet
Weight: 59 oz. • Frame: Stamped Steel

Texas Heat

Size: 12" • Power Rating: 150W RMS • Sensitivity: 99db (8
ohm) 100 dB (16 ohm) • Impedance: 8 or 16 ohms
Voice Coil: 2", 50.8mm • Freq. Response: 70-5kHz
Magnet Weight: 38 oz. • Frame: Stamped Steel



Legend 12-75

Size: 12" • Power Rating: 75W RMS • Sensitivity: 101.1db • Impedance: 8 Ohms • Voice Coil: 1.5", 38mm • Freq. Response: 80-5.1kHz • Magnet Weight: 34 oz. • Frame: Stamped steel



The Governor

Size: 12" • Power Rating: 75W RMS • Sensitivity: 102db • Impedance: 8 or 16 ohms • Voice Coil: 1.75", 44.5mm • Freq. Response: 70-5kHz • Magnet Weight: 56 oz. • Frame: Stamped Steel



CV75

Size: 12" • Power Rating: 75W RMS • Sensitivity: 102.2db 8 ohm • Impedance: 8 ohms • Voice Coil: 1.75", 44.5mm • Freq. Response: 80-5.5kHz • Magnet Weight: 56 oz. • Frame: Stamped Steel



Private Jack

Size: 12" • Power Rating: 50W RMS • Sensitivity: 101db (8 ohm) • Impedance: 8 ohms • Voice Coil: 1.75", 44.5mm • Freq. Response: 70-5kHz • Magnet Weight: 38 oz. • Frame: Stamped Steel



Legend GB128

Size: 12" • Power Rating: 50W RMS • Sensitivity: 101.4db • Impedance: 8 Ohms • Voice Coil: 1.75", 44.5mm • Freq. Response: 80-5.1kHz • Magnet Weight: 38 oz. • Frame: Stamped Steel



Cannibis Rex

Size: 12" • Power Rating: 50W RMS • Sensitivity: 101.8db • Impedance: 8 or 16 ohms • Voice Coil: 1.75", 44.5mm • Freq. Response: 70-5kHz • Magnet Weight: 38 oz. • Frame: Stamped Steel



GA-SC64

Size: 12" • Power Rating: 40W RMS • Sensitivity: 100.5db • Impedance: 8 ohms • Voice Coil: 1.75", 44.5mm • Freq. Response: 80-5.3kHz • Magnet Weight: 38 oz. • Frame: Stamped Steel

10" Guitar Speakers



Ram Rod

Size: 10" • Power Rating: 75W RMS • Sensitivity: 100.2db • Impedance: 8 ohms • Voice Coil: 1.5", 38.1mm • Freq. Response: 80-5kHz • Magnet Weight: 30 oz. • Frame: Stamped Steel



The Copperhead

Size: 10" • Power Rating: 75W RMS • Sensitivity: 98.8db • Impedance: 8 ohms • Voice Coil: 1.5", 38.1mm • Freq. Response: 70-5kHz • Magnet Weight: 20 oz. • Frame: Stamped Steel



Legend 1058

Size: 10" • Power Rating: 75W RMS • Sensitivity: 98.7db • (8ohm) • Impedance: 8 Ohms • Voice Coil: 1.5", 38.1mm • Freq. Response: 100-6kHz • Magnet Weight: 16 oz. • Frame: Stamped Steel



Ragin Cajun

Size: 10" • Power Rating: 75W RMS • Sensitivity: 100.5db • Impedance: 8 ohms • Voice Coil: 1.5", 38.1mm • Freq. Response: 70-5kHz • Magnet Weight: 30 oz. • Frame: Stamped Steel



Lil' Buddy

Size: 10" • Power Rating: 50W RMS • Sensitivity: 98.8db • Impedance: 8 ohms • Voice Coil: 1.75", 44.5mm • Freq. Response: 80-5kHz • Magnet Weight: 30 oz. • Frame: Stamped Steel



Legend 102.8K

Size: 10" • Power Rating: 35W RMS • Sensitivity: 97.4db • Impedance: 8 Ohms • Voice Coil: 1", 25.1mm • Freq. Response: 100-5.5kHz • Magnet: Alnico • Frame: Stamped Steel



GA10-SC64

Size: 10" • Power Rating: 20W RMS • Sensitivity: 98.2db • Impedance: 8 or 16 ohms • Voice Coil: 1", 25mm • Freq. Response: 100-5.5kHz • Resonant Freq: 98.2kHz • Magnet Weight: 15 oz. • Frame: Stamped Steel



GA10-SC59

Size: 10" • Power Rating: 20W RMS • Sensitivity: 97db • Impedance: 8 ohms • Voice Coil: 1", 25mm • Freq. Response: 100-5.3kHz • Resonant Freq: 102kHz • Magnet Weight: 6 oz. • Frame: Stamped Steel



Cannibis Rex 10

Size: 10" • Power Rating: 50W RMS • Sensitivity: 99.3db • Impedance: 8 Ohms • Voice Coil: 1.75", 44.5mm • Freq. Response: 80-5.3kHz • Resonant Freq: 130 Hz • Magnet Weight: 38 oz. • Frame: stamped steel

6"- 8" Guitar Speakers



820H

Size: 8" • Power Rating: 20W RMS • Sensitivity: 96.1db • Impedance: 4 ohms • Voice Coil: 1.0", 25.4mm • Freq. Response: 80-4.6kHz • Magnet Weight: 15 oz. • Frame: Stamped Steel



620H

Size: 6.5" • Power Rating: 20W RMS • Sensitivity: 94.6db • Impedance: 4 ohms • Voice Coil: 1.0", 25.4mm • Freq. Response: 100-5.3kHz • Magnet Weight: 15 oz. • Frame: Stamped Steel

2" HF Compression Drivers



N320T-8

NEODYMIUM

Throat Size: 2" 4-bolt • Diaphragm: Titanium • Power Rating: 100W RMS • Sensitivity: 110.4db • Voice Coil: 3", 76mm • Frequency Response: 800-20kHz • Impedance: 8 Ohm • Recommended X-over: 800 Hz.



PSD3006

Throat Size: 2" 3-bolt • Diaphragm: Titanium • Power Rating: 100W RMS • Sensitivity: 108.8db • Frequency Response: 500-18kHz • Impedance: 8 Ohm • Recommended X-over: 500 or 800 Hz.

1.4" HF Compression Drivers



N314X.8

NEODYMIUM

Throat Size: 1.4" 4-bolt • Diaphragm: Titanium • Power Rating: 150W RMS • Sensitivity: 110.5db • Frequency Response: 500-20kHz • Voice Coil: 3", 76mm • Impedance: 8 Ohm • Recommended X-over: 800 Hz • Carbon fiber diaphragm material

N314T.8/N314T.16

NEODYMIUM

Throat Size: 1.4" 4-bolt • Diaphragm: Titanium • Power Rating: 100W RMS • Sensitivity: 110.9db • Frequency Response: 800-20kHz • Voice Coil: 3", 76mm • Impedance: 8 or 16 Ohm • Recommended X-over: 800 Hz

1" HF Compression Drivers



PSD2013/PSD2013S

Throat Size: 1" 3-bolt or screw-on • Diaphragm: Titanium • Power Rating: 85W RMS • Sensitivity: 108.3db • Frequency Response: 1.5-20kHz • Impedance: 8 or 16 ohms (bolt-on); 8 ohms (screw-on); no 16 ohm screw-on version • Voice Coil: 2" • Recommended X-over: 1.5K

PSD2002/PSD2002S

Throat Size: 1" 3-bolt or screw-on • Diaphragm: Titanium • Power Rating: 80W RMS • Sensitivity: 105db • Frequency Response: 1.5-20kHz • Impedance: 8 or 16 ohms • Voice Coil: 2" • Recommended X-over: 1.6K

ASD1001S

Throat Size: 1" screw-on • Diaphragm: Diamond Titanium • Power Rating: 50W RMS • Sensitivity: 103db • Frequency Response: 2.5-19kHz • Impedance: 8 Ohms • Voice Coil: 1.357" • Recommended X-over: 2.5K/18db

ASD1001B

Throat Size: 1" bolt-on • Diaphragm: Titanium • Power Rating: 50W AES • Sensitivity: 104.1db • Frequency Response: 2.5-20kHz • Impedance: 8 Ohms • Voice Coil: 1.3", 33mm • Recommended X-over: 2.5K/18db • 12 oz. Ferrite Magnet

N151M-8

NEODYMIUM

Throat Size: 1" bolt-on • Diaphragm: Mylar • Power Rating: 45W AES • Sensitivity: 111.5db • Frequency Response: 1.8-27kHz • Impedance: 8 Ohms • Voice Coil: 1.5", 38.1mm • Recommended X-over: 1.8K/12db • 4.5 oz. Neodymium Magnet

F151M-8

Throat Size: 1" bolt-on • Diaphragm: Mylar • Power Rating: 45W AES • Sensitivity: 108.9db • Frequency Response: 1.8-20kHz • Impedance: 8 Ohms • Voice Coil: 1.5", 38.1mm • Recommended X-over: 1.8K/12db • 15 oz. Ferrite Magnet

F110M-8

Throat Size: 1" screw-on • Diaphragm: Mylar • Power Rating: 25W AES • Sensitivity: 108.4db • Frequency Response: 2k-20kHz • Impedance: 8 Ohms • Voice Coil: 1", 25.4mm • Recommended X-over: 2K/12db • 12 oz. Ferrite Magnet

Tweeters/Horn Drivers



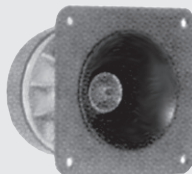
APT30

Diaphragm: Phenolic • Power Rating: 10W AES • Sensitivity: 94.3db • Frequency Response: 3.5-20kHz • Impedance: 8 Ohms • Recommended X-over: 3.5K • Weight: .4 lbs.



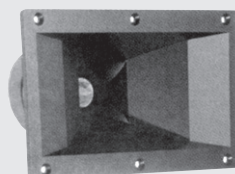
APT50

Diaphragm: Phenolic • Power Rating: 45W RMS • Sensitivity: 105db • Frequency Response: 3.5-20kHz • Impedance: 8 Ohms • Recommended X-over: 3.5K • Weight: 1.5 lbs. • Application Note: Must be used with APT-3



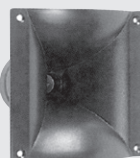
APT80

Diaphragm: Phenolic • Power Rating: 45W RMS • Sensitivity: 105db • Frequency Response: 3.5-20kHz • Impedance: 8 Ohms • Weight: 1.6 lbs. • Recommended X-over: 3.5K • Size: 3.4" x 3.4" • Cutout Dimension: 3.15" circular



APT150

Diaphragm: Phenolic • Power Rating: 45W RMS • Sensitivity: 105db • Frequency Response: 3.5-20kHz • Impedance: 8 Ohms • Weight: 2.2 lbs. • Recommended X-over: 3.5K • Size: 7.5" x 4.5" • Cutout Dimension: 6.7" x 3.4"



APT200

- 1-inch exit used with APT 50 driver
- ABS glass-filled polycarbonate
- 90° x 90°; 1kHz cut-off
- 5.9"W x 5.9"H x 5.1"D
- Cut-out: 4.25" x 4.5"



BGH25-8

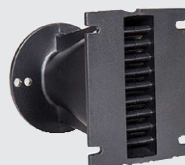
Diaphragm: Phenolic • Power Rating: 25W RMS • Sensitivity: 105.2db • Frequency Response: 2.5-20kHz • Impedance: 8 Ohms • Weight: 2.2 lbs. • Recommended X-over: 2.5K • Size: 4.2" x 4.2" • Cutout Dimension: 3.5", 88.9mm circular



SD28

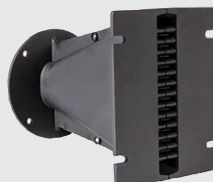
Silk dome • Power Rating: 10W AES • Sensitivity: 92.5db • Frequency Response: 1.5-20kHz • Impedance: 8 Ohms • Weight: 1 lb. • Recommended X-over: 1.5K • Size: 1.48" x 1" • Cutout Dimension: rear-mount

Wave Guides



LA-WG10

- 1-inch exit, bolt-on
- Aluminum
- 140° x 15"; 1.8kHz cut-off
- 3.5" x 4.4" x 4.4"; 89 x 112 x 112 mm
- Cut-out: 1 x 4"; 25.4 x 102 mm



LA-WG14

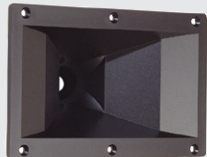
- 1.4-inch exit, bolt-on
- Aluminum
- 140° x 15"; 1.0kHz cut-off
- 5.2" x 6.4" x 7.1"; 131 x 163 x 181 mm
- Cut-out: 1 x 6"; 25.4 x 152.4 mm

Horns



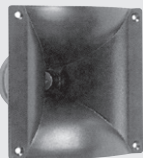
APT80S

- 1-inch exit
- ABS glass-filled polycarbonate
- 80° conical; 3kHz cut-off
- 2.94" circle
- Cut-out: 3.4" x 6.7"



APT150S

- 1-inch exit
- ABS glass-filled polycarbonate
- 100° x 50°; 1.5kHz cut-off
- 4.49"W x 7.55"H x 3.18"D
- Cut-out: 3.4" x 6.7"



APT200S

- 1-inch exit used with APT 50 driver
- ABS glass-filled polycarbonate
- 90° x 90°; 1kHz cut-off
- 5.9"W x 5.9"H x 5.1"D
- Cut-out: 4.25" x 4.5"



BH410

- 1-inch exit, 3-bolt mounting
- ABS glass-filled polycarbonate
- 60° x 60°; 1kHz cut-off
- 5.59"W x 5.59"H x 4.38"D
- Cut-out: 3.56" x 3.56"



H2EA

- 2-inch exit
- ABS glass-filled polycarbonate
- 60° x 40°; 700Hz cut-off
- 12.4"W x 7.3"H x 6.1"D
- Cut-out: 11.3" x 6.3"



H290S

- 1-inch exit screw-on
- ABS glass-filled polycarbonate
- 90° x 40°; 1.0kHz cut-off
- 11.7"W x 6.6"H x 6.6"D
- Cut-out: 9.7" x 4.9"



H290B

- 1-inch exit bolt-on
- ABS glass-filled polycarbonate
- 90° x 40°; 1.0kHz cut-off
- 11.7"W x 6.6"H x 6.6"D
- Cut-out: 9.7" x 4.9"



H14EA

- 1.4-inch exit
- Aluminum
- 60° x 40°; 600Hz cut-off
- 12.6"W x 7.5"H x 7.9"D
- Cut-out: 11.3" x 6.1"

Replacement Diaphragms



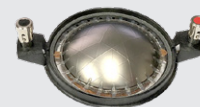
PSD 2002 RD

Replacement diaphragm for the PSD2002 & PSD 2002S drivers, 8 and 16 ohm



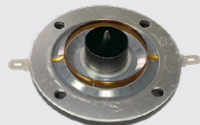
MD2001 RD

Replacement diaphragm for the MD2001 driver, 8 and 16 ohm



N314TDIA

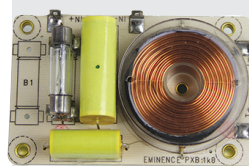
Replacement diaphragm for the N314T and N320T drivers, 8 ohms.



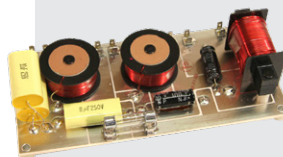
N151MDIA

Replacement diaphragm for the N151M and F151M drivers, 8 ohms.

PX Series Crossovers



High-powered crossovers feature board-mounted components only which can be mounted internally. Fused for protection.



Crossover Specifications

pxb-250

Type: Low-Pass • Cabinet Ready: No • Crossover Freq: 250Hz • Slope: 12db/octave Butterworth • Impedance: 8 ohms • Power Handling: 600W RMS

pxb-3k5

Type: High-Pass • Cabinet Ready: No • Crossover Freq: 3.5kHz • Slope: 18db/octave Butterworth • Impedance: 8 ohms • Power Handling: 400W RMS

pxb2-1k6

Type: High-Pass 2-way • Cabinet Ready: No • Crossover Freq: 1.6kHz • Slope: 18db/octave Butterworth • Impedance: 8 ohms • Power Handling: 400W RMS

pxb2-2k5cx

Type: High-Pass 2-way • Cabinet Ready: No • Crossover Freq: 2.5kHz • Slope: 18db/octave Butterworth • Impedance: 8 ohms • Power Handling: 400W RMS

pxb2-3k5

Type: High-Pass 2-way • Cabinet Ready: No • Crossover Freq: 3.5kHz • Slope: 18db/octave Butterworth • Impedance: 8 ohms • Power Handling: 400W RMS



HA1-14

Aluminum adapter allows you to pair a 1" bolt-on horn or driver with a 1.4" bolt-on device.



S2B-A

Aluminum adapter converts bolt-on driver to accept a screw-on horn. 2x1/4-20 or 3x M6 driver to 1-3/8" 18 thread horn.



B2S-A

Aluminum adapter converts screw-on driver to accept a bolt-on horn. 1 3/8" 18 ext. driver to 2x 1/4-20 or 3x M6 horn.



HA14-2

Aluminum adapter allows you to pair a 1.4" bolt-on horn or driver with a 2" bolt-on device.



PX-L-Pad

Crossover L-Pad Attenuator



PX-Bulb

PX Series Crossover
Replacement Bulb-Fuse

21" Subwoofer

**21NLTW5000**

Size: 21" • Power Rating: 1800W AES • Sensitivity: 97dB • Impedance: 8 Ohms • Voice Coil: 4.5" (115mm) • Freq. Response: 30-1.8kHz • Frame: Cast Aluminum

NEODYMIUM

**21NLW9601**

Size: 21" • Power Rating: 1800W AES • Sensitivity: 98dB • Impedance: 4 or 8 Ohms • Voice Coil: 5.3" (135mm) • Freq. Response: 25-2kHz • Frame: Cast Aluminum

NEODYMIUM

**21LW2600**

Size: 21" • Power Rating: 1300W AES • Sensitivity: 95dB • Impedance: 8 Ohms • Voice Coil: 4" • Freq. Response: 30-1000 Hz • Resonant Frequency: 29 Hz • Frame: Cast Aluminum

**21LW1400**

Size: 21" • Power Rating: 1500W AES • Sensitivity: 99dB • Impedance: 8 Ohms • Voice Coil: 4" • Resonant Frequency: 29 Hz • Freq. Response: 24-2kHz • Frame: Cast Aluminum

18" Subwoofer

**18NTLW5000**

Size: 18" • Power Rating: 1800W AES • Sensitivity: 95dB • Impedance: 8 Ohms • Voice Coil: 4.5" (115mm) • Freq. Response: 30-1.8kHz • Frame: Cast Aluminum

NEODYMIUM

**18NLW9601**

Size: 18" • Power Rating: 1800W AES • Sensitivity: 97dB • Impedance: 4 or 8 Ohms • Voice Coil: 5.32" (135mm) • Freq. Response: 30-2.5kHz • Frame: Cast Aluminum

NEODYMIUM

**18NLW4500**

Size: 18" • Power Rating: 1800W AES • Sensitivity: 97dB • Impedance: 8 Ohms • Voice Coil: 4.5" (115mm) • Freq. Response: 30-1kHz • Frame: Cast Aluminum

NEODYMIUM

**18LW2420**

Size: 18" • Power Rating: 1300W AES • Sensitivity: 97dB • Impedance: 8 Ohms • Voice Coil: 4" • Freq. Response: 29-2.5kHz • Frame: Cast Aluminum

**18LW2600**

Size: 18" • Power Rating: 1500W AES • Sensitivity: 97dB • Impedance: 8 Ohms • Voice Coil: 4" • Freq. Response: 30-800Hz • Frame: Cast Aluminum

**18LW2400**

Size: 18" • Power Rating: 1200W AES • Sensitivity: 98dB • Impedance: 8 Ohms • Voice Coil: 4" • Freq. Response: 30-2.5kHz • Frame: Cast Aluminum

15" Subwoofer

**15NTLW3500**

Size: 15" • Power Rating: 900W AES • Sensitivity: 98dB • Impedance: 8 Ohms • Voice Coil: 4" • Freq. Response: 40-4kHz • Frame: Cast Aluminum

NEODYMIUM

**15LW2400**

Size: 15" • Power Rating: 1,200W AES • Sensitivity: 97dB • Impedance: 8 Ohms • Voice Coil: 4" • Freq. Response: 40-2.2kHz • Frame: Cast Aluminum

**15NLW9401**

Size: 15" • Power Rating: 1,200W AES • Sensitivity: 97.5dB • Impedance: 8 Ohms • Voice Coil: 4" • 100mm • Freq. Response: 37-2.3kHz • Frame: Cast Aluminum

NEODYMIUM

15" Bass/Mid-Bass

**15MB1000**

Size: 15" • Power Rating: 850W AES • Sensitivity: 98dB • Impedance: 8 Ohms • Voice Coil: 4" • Freq. Response: 45-5.1kHz • Frame: Cast Aluminum

**15NMB1000**

Size: 15" • Power Rating: 900W AES • Sensitivity: 101dB • Impedance: 8 Ohms • Voice Coil: 4" • Freq. Response: 45-2.5kHz • Frame: Cast Aluminum

NEODYMIUM

**15MB700**

Size: 15" • Power Rating: 400W AES • Sensitivity: 103dB • Impedance: 8 Ohms • Voice Coil: 3" • Freq. Response: 45-4.3kHz • Frame: Cast Aluminum

12" Bass/Mid-Bass

**12NTLW3500**

Size: 12" • Power Rating: 900W AES • Sensitivity: 96dB • Impedance: 8 Ohms • Voice Coil: 3.5" (88mm) • Freq. Response: 50-3kHz • Frame: Cast Aluminum

NEODYMIUM

**12LW1400**

Size: 12" • Power Rating: 900W AES • Sensitivity: 96dB • Impedance: 8 Ohms • Voice Coil: 4" • Freq. Response: 51-4kHz • Frame: Cast Aluminum

12" Bass/Mid-Bass

**12NMB1000**

NEODYMIUM

Size: 12" • Power Rating: 600W AES • Sensitivity: 102dB • Impedance: 8 Ohms • Voice Coil: 4" • Resonant Frequency: 54 Hz • Freq. Response: 60-3kHz • Frame: Cast Aluminum

12MB1000

Size: 12" • Power Rating: 600W AES • Sensitivity: 102dB • Impedance: 8 Ohms • Voice Coil: 4" • Freq. Response: 80-3.5kHz • Frame: Cast Aluminum

12MB700

Size: 12" • Power Rating: 450W AES • Sensitivity: 101.5dB • Impedance: 8 Ohms • Voice Coil: 3" • Freq. Response: 60-5kHz • Frame: Cast Aluminum

12ND610

NEODYMIUM

Size: 12" • Power Rating: 450W AES • Sensitivity: 102dB • Impedance: 8 Ohms • Voice Coil: 3" • Freq. Response: 80-5.5kHz • Frame: Cast Aluminum

10" Bass/Mid-Bass

**10NW750**

NEODYMIUM

Size: 10" • Power Rating: 450W AES • Sensitivity: 94dB • Impedance: 8 Ohms • Voice Coil: 3" • Freq. Response: 50-5kHz • Frame: Cast Aluminum

10M600

Size: 10" • Power Rating: 450W AES • Sensitivity: 102dB • Impedance: 8 Ohms • Voice Coil: 3" • Freq. Response: 55-4.5kHz • Frame: Cast Aluminum

10NDA610

NEODYMIUM

Size: 10" • Power Rating: 400W AES • Sensitivity: 103dB • Impedance: 8 Ohms • Voice Coil: 3" • Freq. Response: 100-6.1kHz • Frame: Cast Aluminum

10NTLW2000

NEODYMIUM

Size: 10" • Power Rating: 350W AES • Sensitivity: 97dB • Impedance: 8 Ohms • Voice Coil: 2" • Freq. Response: 50-3kHz • Frame: Cast Aluminum

10NMB420

NEODYMIUM

Size: 10" • Power Rating: 350W AES • Sensitivity: 99dB • Impedance: 8 Ohms • Voice Coil: 2.5" • Freq. Response: 65-5kHz • Frame: Cast Aluminum

8" Bass/Mid-Bass

**8NMB750**

NEODYMIUM

Size: 8" • Power Rating: 350W AES • Sensitivity: 93.5dB • Impedance: 8 Ohms • Voice Coil: 2.95" • Freq. Response: 56-7kHz • Frame: Cast Aluminum

8NMB650

NEODYMIUM

Size: 8" • Power Rating: 300W AES • Sensitivity: 96dB • Impedance: 8 Ohms • Voice Coil: 2.5" • Freq. Response: 55-6.3kHz • Frame: Cast Aluminum

8" Bass/Mid-Bass

**8MB500**

Size: 8" • Power Rating: 280W AES • Sensitivity: 95dB • Impedance: 8 Ohms • Voice Coil: 2.0" • Freq. Response: 60-4.5kHz • Frame: Cast Aluminum

8NW650

NEODYMIUM

Size: 8" • Power Rating: 300W AES • Sensitivity: 96dB • Impedance: 8 Ohms • Voice Coil: 2.5" • Freq. Response: 55-6.3kHz • Frame: Cast Aluminum

8NMB420

NEODYMIUM

Size: 8" • Power Rating: 250W AES • Sensitivity: 95dB • Impedance: 8 Ohms • Voice Coil: 2.0" • Freq. Response: 60-5.5kHz • Frame: Cast Aluminum

8M400

Size: 8" • Power Rating: 250W AES • Sensitivity: 100.5dB • Impedance: 8 Ohms • Voice Coil: 2.0" • Freq. Response: 120-6.1kHz • Frame: Cast Aluminum

6" Bass/Mid-Bass

**6NMB420**

NEODYMIUM

Size: 6" • Power Rating: 280W AES • Sensitivity: 95dB • Impedance: 8 Ohms • Voice Coil: 2.0" • 51mm • Freq. Response: 60-5.5kHz • Frame: Cast Aluminum

6ND430

NEODYMIUM

Size: 6" • Power Rating: 200W AES • Sensitivity: 92.5dB • Impedance: 8 Ohms • Voice Coil: 1.7" • Freq. Response: 63-5.5kHz • Frame: Cast Aluminum

6NM410

NEODYMIUM

Size: 6" • Power Rating: 180W AES • Sensitivity: 102dB • Impedance: 8 Ohms • Voice Coil: 1.7" • Freq. Response: 200-8kHz • Frame: Cast Aluminum • Replaces 6ND410.

2" HF Compression Driver

**ND2080**

NEODYMIUM

Size: 2" throat diameter • Power Rating: 100W RMS • Sensitivity: 110dB • Impedance: 8 Ohms • Voice Coil: 3" • Freq. Response: 500-20kHz • Crossover: 800 Hz.

ND32ST

NEODYMIUM

Size: 2" throat diameter • Power Rating: 120W RMS • Sensitivity: 112dB • Impedance: 8 Ohms • Voice Coil: 3" • Freq. Response: 800-20kHz • Crossover: 1200 Hz.

ND2060

NEODYMIUM

Size: 2" throat diameter • Power Rating: 80W RMS • Sensitivity: 110dB • Impedance: 8 or 16 Ohms • Voice Coil: 3" • Freq. Response: 500-20kHz • Crossover: 800 Hz.

HD3020T

Size: 2" throat diameter • Power Rating: 110W RMS • Sensitivity: 110dB • Impedance: 8 Ohms • Voice Coil: 3" • Freq. Response: 800-20kHz • Crossover: 1000 Hz.

1.5" HF Compression Driver

**ND4015Ti2**

Size: 1.5" throat diameter • Power Rating: 160W RMS • Sensitivity: 113dB • Impedance: 8 Ohms • Voice Coil: 4" • Freq. Response: 800-20kHz • Crossover: 800 Hz.

NEODYMIUM

Horn/Driver Horn Combos

**XD125**

Size: 1" throat diameter • Power Rating: 50W RMS • Sensitivity: 108db • Voice Coil: 1" • Freq. Response: 2-18kHz • Crossover: 2.5k Hz.

1.4" HF Compression Driver

**ND1460**

Size: 1.4" throat diameter • Power Rating: 200W RMS • Sensitivity: 109dB • Impedance: 8 Ohms • Voice Coil: 3" • Freq. Response: 500-20kHz • Crossover: 800 Hz.

NEODYMIUM

**ND32ST**

Size: 1.4" throat diameter • Power Rating: 120W RMS • Sensitivity: 112dB • Impedance: 8 Ohms • Voice Coil: 3" • Pure Titanium diaphragm • Freq. Response: 800-20kHz • Crossover: 1200 Hz.

NEODYMIUM

**HD3000T**

Size: 1.4" throat diameter • Power Rating: 120W RMS • Sensitivity: 112dB • Impedance: 8 Ohms • Voice Coil: 3" (75mm), Pure Titanium diaphragm • Freq. Response: 800-20kHz • Crossover: 1200 Hz.

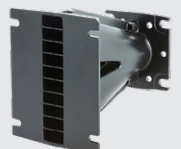
Horns - (Special Order Only)

**XR2064C**

Size: 2" throat diameter • Coverage: 60°H x 40°V • Material: Aluminum • Crossover: 800 Hz.

**XG14**

Size: 1.4" throat diameter • Coverage: 120°H x 10°V • Material: Die-cast aluminum • Crossover: 1000 Hz.

**XG10**

Size: 1.0" throat diameter • Coverage: 120°H x 10°V • Material: Die-cast aluminum • Crossover: 1200 Hz.

**XT1086**

Size: 1" throat diameter • Coverage: 90°H x 60°V • Material: Aluminum • Crossover: 1200 Hz. • 3 or 4-bolt patterns

1" HF Compression Driver

**ND1050**

Size: 1" throat diameter • Power Rating: 50W RMS • Sensitivity: 110dB • Impedance: 8 Ohms • Voice Coil: 1-3/4", Titanium diaphragm • Freq. Response: 1600-20kHz • Crossover: 1600 Hz.

NEODYMIUM

**ND1090**

Size: 1" throat diameter • Power Rating: 50W RMS • Sensitivity: 110dB • Impedance: 8 Ohms • Voice Coil: 1-3/4", Titanium PEN diaphragm • Freq. Response: 1600-20kHz • Crossover: 1600 Hz.

NEODYMIUM

**NSD1095N**

Size: 1" throat diameter • Power Rating: 50W RMS • Sensitivity: 110dB • Impedance: 8 Ohms • Voice Coil: 1-3/4", TiN coated Titanium diaphragm • Freq. Response: 1600-20kHz • Crossover: 1600 Hz.

NEODYMIUM

**HD1050**

Size: 1" throat diameter • Power Rating: 50W RMS • Sensitivity: 107db • Impedance: 8 Ohms • Voice Coil: 1.75", Titanium PEN diaphragm • Freq. Response: 1600-20kHz • Crossover: 1600 Hz.

**HD125**

Size: 1" throat diameter • Power Rating: 25W RMS • Sensitivity: 109db • Impedance: 8 Ohms • Voice Coil: 1", polyester diaphragm • Freq. Response: 200-18kHz • Crossover: 2500 Hz.



Replacement Diaphragms

**81161**

Replacement diaphragm for the EV DH2A, DH2, DH2/AS1, DH2/AS2, DH2AMT and DH2T drivers.

**81514**

Replacement diaphragm for the EV DH2010A, DH200S, DH2010A and DH3 drivers. Also fits 89858xx.

**F01U281501**

EV 84233 Diaphragm for DH6, ND6-16. 16 ohm. 84233xx

**F018281502**

EV 84234 Diaphragm for DH5-8WPX, DH6-8, DH7-8, N-DYM-1, N/DYM5-8, N/DYM 5-8/2, ND6-8. Also replaces EV DH1, DH1A, DH1AM7, DH1A-WP, DH1A-WPX, DH1012, N-DYM1 and N-DYM-TMT drivers. 84234xx and 81256xx.

**DH1K**

Replacement Diaphragm used in DH1K, DH1-K, ELX112, ELX115, ELX215, ELX-112, ELX-115, ELX-215, ELX112P, ELX115P, ELX-112P, ELX-115P, ASY001060000, S-F01U247593, Live X, Live-X, LiveX

18" Subwoofer



Omega Pro 18A/18C

Size: 18" • Power Rating: 800W RMS • Sensitivity: 97db • Impedance: 4(C) or 8(A) Ohms • Voice Coil: 4", 101.6mm • Freq. Response: 40-800 Hz • Resonant Freq.: 25 Hz • Magnet Weight: 109 oz • Frame: Cast Aluminum
Replacement speaker for Mackie SWA1801.



FTR18-4080HDX

Size: 18-inch • Power Rating: 1000W RMS • Sensitivity: 95dB • Frequency Response: 30-2.5kHz • Impedance: 8 ohm • Magnet: 110 oz. Ferrite • Voice Coil: 4" Round Copper • Frame: Cast Aluminum
Replacement for EAW LC18-4004-8.

15" Subwoofer



Kappa Pro 15LFA-2

Size: 15" • Power Rating: 600W RMS • Sensitivity: 97.8db • Impedance: 8 Ohms • Voice Coil: 3", 76.2mm • Freq. Response: 38-1.8kHz • Resonant Freq.: 35 Hz • Magnet Weight: 120 oz • Frame: Cast Aluminum



Kappa Pro 15A

Size: 15" • Power Rating: 500W RMS • Sensitivity: 101db • Impedance: 8 Ohms • Voice Coil: 3", 76.2mm • Freq. Response: 46-4kHz • Resonant Freq.: 47 Hz • Magnet Weight: 80 oz • Frame: Cast Aluminum



Delta Pro 15A

Size: 15" • Power Rating: 400W RMS • Sensitivity: 101.6db • Impedance: 8 Ohms • Voice Coil: 2.5", 63.5mm • Freq. Response: 54-4.2kHz • Resonant Freq.: 42 Hz • Magnet Weight: 80 oz • Frame: Cast Aluminum • This is an excellent replacement for the B&C 15PLB76 and will replace Yamaha, Marshall and more 15" Cast Frame speakers. Eminence recommends the Kappa Pro 15A as an alternate replacement speaker in the JBL JRX1515, the Yamaha S115V and BR15, the American Audio DLS-15P, and the Mackie SMR450 and SR1530z speaker cabinets.

12" Bass/Mid-Bass



Delta Pro 12A

Size: 12" • Power Rating: 400W RMS • Sensitivity: 99.2db • Impedance: 8 Ohms • Voice Coil: 2.5", 63.5mm • Freq. Response: 52-4.5kHz • Resonant Freq.: 51 Hz • Magnet Weight: 80 oz. • Frame: Cast Aluminum • (as a Guitar Speaker it compares favorably to the EVM12L-BL), replacement for EAW FR129Z, EAW SM122e, 804058, LC1243



TF 1230S

Size: 12-inch • Power Rating: 300W RMS • Sensitivity: 96dB • Frequency Response: 50-4kHz • Impedance: 8 ohm • Magnet: 60 oz. Ferrite • Voice Coil: 3" Edgewound Copper Clad Aluminum • Frame: Pressed Steel

Ideal replacement for Mackie SRM450 v2/v3.



Beta12A-2

Size: 12" • Power Rating: 250W RMS • Sensitivity: 98db • Impedance: 8 Ohms • Voice Coil: 2.0", 50.8mm • Freq. Response: 43-3.8kHz • Resonant Freq.: 47 Hz • Magnet Weight: 38 oz. • Frame: Stamped Steel

Ideal replacement for Mackie Thump 12.



Alpha 12A

Size: 12" • Power Rating: 150W RMS • Sensitivity: 95.6db • Impedance: 8 Ohms • Voice Coil: 1.5", 38.1mm • Freq. Response: 51-4.3kHz • Resonant Freq.: 49 Hz • Magnet Weight: 20 oz. • Frame: Stamped Steel

10" Bass/Mid-Bass



Beta 10A

Size: 10" • Power Rating: 250W RMS • Sensitivity: 97db • Impedance: 8 Ohms • Voice Coil: 2.0", 50.8mm • Freq. Response: 51-3.8kHz • Resonant Freq.: 53 Hz • Magnet Weight: 34 oz. • Frame: Stamped Steel

Ideal replacement for Mackie SRM-350.

6" Midrange



Alpha 6A/6C

Size: 6" • Power Rating: 100W RMS • Sensitivity: 93.6db • Impedance: 4 or 8 Ohms • Voice Coil: 1.5", 38.1mm • Freq. Response: 85-6kHz • Resonant Freq.: 118 Hz • Magnet Weight: 20 oz. • Frame: Stamped Steel

Replacement Diaphragms



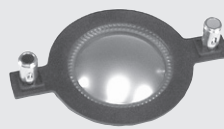
RDMMD75

Replacement Diaphragm for EAW* / B&C Models: DM-5001, CD-5001, DM-5002, CD5002, DM-5003, DM5003, CD-5003, DM-5005, CD-5005, DE-75-8, MMD75-8, MMD75TN, DE75TN, DE82TN, DE-85-TN, DE72TN, also fits EAW CD3512 and DE72-8 8 and 16 ohm.



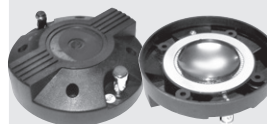
SD750N RD

Replacement Diaphragm for the SD750N High Frequency Compression Drivers, 8 ohm. Fits EAW DN14/3003-8, CD6001.



BMD440.8RD

Replacement diaphragm for the BMD440 & BMD450 HF Driver. They have titanium domes with edgewound voice coils and Nomex formers. This replacement diaphragm can be used in the P Audio model 440, BMD-440, BMD-440S, BMD-450, BMD-450S, and more. This replacement diaphragm is also used by many other manufacturers such as American Audio, Atlas, Berhinger, EAW, Gemini, TVI Audio, Mackie, and more. 8 ohm.



SND44.8RD

Replacement diaphragm for P Audio SND44 compression driver, Mackie 0013925, DN10/1704-8, DN10-1704-8, DN10 1704-8, Mackie SA1232Z, SA1521, SA1521Z, SA1530, SA1530Z, SA1532Z cabinet drivers, as well as others, 8 ohms.



HD120 RD

Replacement Diaphragm for the HD120 and XD120 High Frequency Compression Drivers, 8 ohm. Also used in Yorkville 7448 and 7573 compression driver, and in Yorkville cabs NX25P, NX350, TC1510, Y115 and D18C120.

18" Subwoofers



FTR18-4080HDX

Size: 18-inch • Power Rating: 1000W RMS • Sensitivity: 95dB
Frequency Response: 30-2.5kHz • Impedance: 8 ohm •
Magnet: 110 oz. Ferrite • Voice Coil: 4" Round Copper • Frame:
Cast Aluminum • Direct replacement for K181.

CF1840H

Size: 18-inch • Power Rating: 1000W RMS • Sensitivity: 98dB
• Frequency Response: 30-2500Hz • Impedance: 8 ohm •
Weight: 25.5 lb/11.6kg • Voice Coil: 4" inside/outside • Frame:
Cast Aluminum • Magnet: 112 oz. Ferrite • Direct replacement
for the HPR181.

15" Speakers



TF1530

Size: 15-inch • Power Rating: 400W RMS • Sensitivity: 99dB •
Frequency Response: 40-3kHz • Impedance: 8 ohm • Magnet:
86 oz. Ferrite • Voice Coil: 3" Round Copper • Frame: Pressed
Steel • Direct replacement for the KW153.

12" Speakers



TF1220

Size: 12-inch • Power Rating: 150W RMS • Sensitivity: 97dB
• Frequency Response: 60-4kHz • Impedance: 8 ohm • Unit
Weight: 11 lb. • Voice Coil: 2" Round Copper • Frame: Pressed
Steel • Direct replacement for the K12 Sub.



TN 1225

Size: 12-inch • Power Rating: 250W RMS • Sensitivity: 97dB •
Frequency Response: 50-4kHz • Impedance: 8 ohm • Magnet:
Neodymium • Voice Coil: 2.5" Round Copper • Frame: Pressed
Steel • Direct replacement for the K12.



TN 1230

Size: 12-inch • Power Rating: 350W RMS • Sensitivity: 97dB •
Frequency Response: 50-4kHz • Impedance: 8 ohm • Magnet:
Neodymium • Voice Coil: 3" Round Copper • Frame: Pressed
Steel • Direct Replacement for HPR1221.

NEODYMIUM

10" Speakers



TF1020

Size: 10-inch • Power Rating: 150W RMS • Sensitivity: 97dB •
Frequency Response: 60-3kHz • Impedance: 8 ohm • Magnet:
42 oz. Ferrite • Voice Coil: 2" Round Copper • Frame: Pressed
Steel • Direct Replacement for K10.

1" Exit Compression Drivers



CDX1-1745S

Size: 1-inch exit • Power Rating: 40W RMS • Sensitivity: 110dB •
Frequency Response: 1200-20kHz • Impedance: 8 ohm • Magnet:
Ferrite • Voice Coil: 1.75" Edgewound Copper Clad Aluminum •
Diaphragm: PETP Film • Direct Replacement for KW122.

Celestion T5503

Replacement Diaphragm that fits CDX1-1415, CDX1-1425,
CDX1-1430 and the HF Driver in QSC HPR1221 Speaker Box - 8
ohm. Also fits Yorkville NX55P, NX300, YX10, YX12, YX12M,
YX15, YX15P, and YX215 cabs.

Celestion T5510

Replacement for K8, K10, and K12 - 8 ohm



Celestion T5555

Celestion replacement diaphragm that fits CDX1-1720
Direct Replacement for KLA12.

Celestion T5557

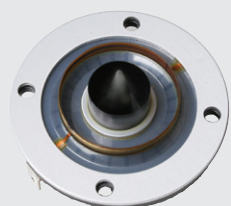
Celestion replacement diaphragm that fits CDX1-1445/6
16 ohm. PETP material. Original was titanium. Direct
Replacement for K12.2.

Replacement Diaphragms



RD-2404

Titanium replacement, fits JBL 2404 & 2405 and others, 8 ohm,
1.75" voice coil.



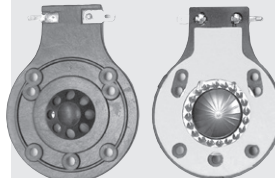
RD-2406

The Loudspeakers Plus RD2406 compares favorably to the JBL
D8R2406 Replacement Annular / Ring Radiator Diaphragm Kit. This
annular / ring radiator diaphragm kit fits the JBL 2406H compres-
sion driver to deliver smooth, extended high frequency output. Fits
JBL M Pro 412, 415



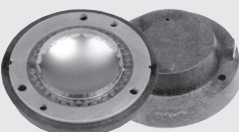
RD-2408

Mylar replacement, fits JBL 2408H and others, 8 ohm, 1.75" voice
coil. Fits most JBL MRX cabinets



RD-2412

These replacement diaphragms have the same style titanium domes, voice
coils, and Kapton formers as original JBL diaphragms. This after market
diaphragm is made to JBL 2412H-1 specifications and fits the 2412 Series of
drivers: 2412, 2412H, 2412H-8, 2412-8, 2412-1, 2412H-1, 2412H-1-8, Sound
Factor Series, SF-15, SR25, SR-25, JRX Series, JRX100, JRX112, JRX112M,
JRX112MI, JRX115, JRX115I, JRX-100, JRX-112M, JRX-112MI, JRX-115, JRX-
115I, TR Series, MPro Series, TR125, TR-225, MP-215, Eon Power15, Eon1500,
Eon Power10, JBL M Pro 212, 215, 225 & 410 and many more! Titanium
replacement, 8 ohms, 1" voice coil.



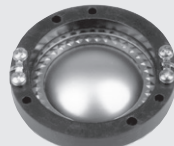
RD-2416

Titanium replacement, fits JBL 2416 and JBL Series "MR" cabinets,
2417, 8 ohm, 1.75" voice coil.



RD-2418

Titanium replacement, fits JBL 2418, X-Tealth and JBL Series "EON"
cabinets, 8 ohm, 1.75" voice coil.



RD-2425

Titanium replacement, fits JBL 2425, JBL 2426, JBL 2427H (8 ohm),
JBL 2427J (16 ohm), Altec 802, 804, 806, 807, 808, 902, 904, 908,
909 and others, 8 or 16 ohms, 1.75" voice coil.



RD-2431

Titanium replacement, fits JBL 2431H, 8 ohms, 3.0" voice coil.



RD-2446

Titanium replacement, fits CD-2445, JBL 2445, JBL 2446, 375, 2440,
2441, 2447, 2450, 2451, Peavey 44T, 44XT and others, 8 or 16 ohms,
4" voice coil. Positive terminal is blue dot.

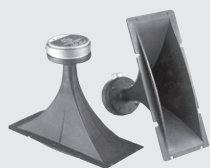


A-150F Speaker System



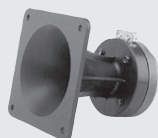
Power Rating: 175W RMS • Frequency Response: 65-20kHz • Sensitivity: 94db • Impedance: 8 ohms • LF Driver: E8-100S, 8", waterproof, die cast frame, 2"VC, rubber surround • HF Driver: PA-DE34S, 1" driver w/2"VC and titanium diaphragm • Horn Dispersion: 90 x 65 • Cabinet: High-impact polycarbonate • Grill: Black powder-coated steel • Connectors: NL4MP Speakon and push terminal • Mounting Hardware: (1) U-bracket and (7) M8 points for flying • Dimensions: 15.8" (400mm) H x 11.5" (292mm) W x 9" (227) D • Weight: 18.48 lbs./8.4kg • Color: Black **Compares favorably to the EV SX-80.**

HF Horn/Driver Combos



PHT404

Size: 10.5" x 4.5" • Diaphragm: Phenolic • Power Rating: 30W RMS • Sensitivity: 105db • Frequency Response: 3-15kHz • Impedance: 8 Ohms • Horn: Cast aluminum 100° x 80° • Uses PHT.8RD diaphragm.



PHT410

Size: 4.3" x 4.3" • Diaphragm: Phenolic • Power Rating: 30W RMS • Sensitivity: 105db • Frequency Response: 2-15kHz • Impedance: 8 Ohms • Horn: ABS with glass-filled polycarbonate • Uses PHT.8RD diaphragm. Used in SWR, Eden and many other bass cabinets.

Replacement Diaphragms



BMD440 RD

Replacement diaphragm for the BMD440 & BMD450 HF Driver, Behringer, Cerwin Vega, EAW, Mackie, Turbosound and others, 8 ohm



BMD440II RD

Replacement diaphragm for BMD440II HF compression driver. 8 ohm



BMD750II RD

Replacement diaphragm for BMD750II HF compression driver. Also fits DB Technologies models. 8 ohm



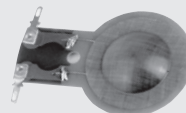
BMD750 RD

Replacement diaphragm for the BMD750 HF Driver, 8 or 16 ohm



PADE34 RD

Replacement diaphragm for the A150F Cabinet, PAD 34 HF Driver, Behringer, Alto PS4 and Behringer B212, B215 and others, 8 ohm



PHT.8RD

Replacement diaphragm for the PHT Series HF Drivers, 8 ohm



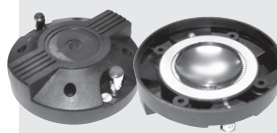
SD75RD

Replacement diaphragm for SD75BF and SD75BN. 8 ohm.



SD750N RD

Replacement diaphragm for the SD750 HF Driver, Mackie and others, 8 ohm



SND44 RD

Replacement diaphragm for the SND44 HF Driver, Mackie and others, 8 and 16 ohm

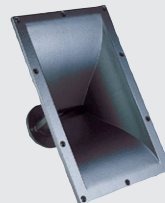
2" Compression Drivers



BMD750II

- 2-inch exit, 4-bolt mounting
- 100W RMS
- 3" high-temp aluminum wire voice coil
- Bolt-on
- Titanium diaphragm
- 10.8 lbs.

2" Exit Horns



PH2380

- 2-inch exit, 4-bolt mounting
- ABS glass-filled polycarbonate
- 90° x 40°; 400 Hz cut-off
- 11.0" H x 17.5" W x 9.25" D
- Cutout: 9.25" H x 14.8" W

1" Exit Horns



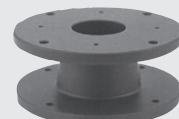
PH220

- 1-inch exit, 3-bolt mounting
- Cast aluminum horn
- 90° x 75°; 800 Hz cut-off
- 8.7" H x 8.7" W x 5.24" D
- Cutout: 7.1" H x 7.1" W

Adapters



PC-3525S

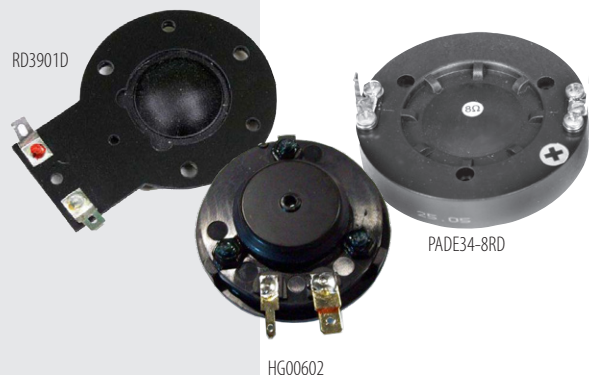


PC-5038

PC3525S- 1" Single adapter converts 1" screw-on drivers to a 1.4" exit, bolt-on horn.
PC5038- Single adapter converts one 1.4" bolt-on driver to a 2" exit, bolt-on horn



Speakers, High Frequency Drivers & Replacement Diaphragms



If you need Alto repair parts, we carry the replacement speakers, high-frequency drivers, recone kits and replacement diaphragms you need.

Call us today for more information about the Alto repair products



Speakers, High Frequency Drivers & Replacement Diaphragms

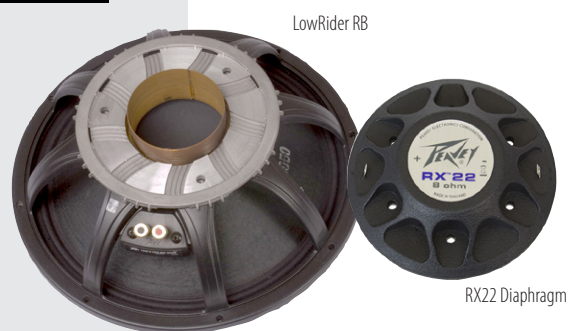


Get the Behringer repair products, including speakers, high-frequency drivers, recone kits and replacement diaphragms.

Call us today for more information about Behringer parts.



Speakers, High Frequency Drivers & Replacement Diaphragms

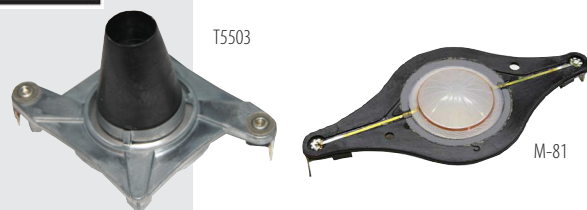


Need some Peavey replacement parts? We carry the replacement speakers, high-frequency drivers, and replacement diaphragms you need.

Call us today for more information about the Peavey repair products that you need.



Speakers, High Frequency Drivers & Replacement Diaphragms



Need some Yorkville replacement parts? We carry the replacement speakers, high-frequency drivers, and replacement diaphragms you need.

Call us today for more information about the Yorkville repair products

RELENTLESS HIGH QUALITY PERFORMANCE

PowerProX18

18-inch / 2400W

For demanding
bass applications

Featuring an advanced cooling system and components with superior thermal stability, PowerProX18 operates with its voice coil consistently at 20°C lower than competing products.

The result is ultimate control over power compression, extreme reliability and a relentless high quality performance, even after 100s of hours of use.

LET'S TALK

For more information, contact:
engineering@celestion.com